

LEA Name : Interboro SD  
Address : 900 Washington Ave  
Prospect Park , PA 19076

County : Delaware  
AUN Number : 125235103  
LEA Type : SD

## Annual Financial Report Accuracy Certification Statement

For Fiscal Year Ending  
6/30/2018

Pennsylvania Department of Education  
&  
Office of Comptroller Operations


PDE-2056: Intermediate Unit

PDE-2057: School District, AVTS/CTC, Charter School,  
and Special Program Jointure

**CERTIFICATION: By signing this page I agree that the electronic data submitted is a complete and accurate statement of the financial operations and status of the local education agency for the fiscal year. It has been prepared in accordance with generally accepted accounting principles and established Commonwealth of PA reporting guidelines.**

  
Chief School Administrator Signature

  
Date

  
Board Secretary Signature

  
Date

Martin Heiskell

Contact Person

[martin.heiskell@interborosd.org](mailto:martin.heiskell@interborosd.org)

Contact Person E-mail Address

(610)461-6700

Ext :1125

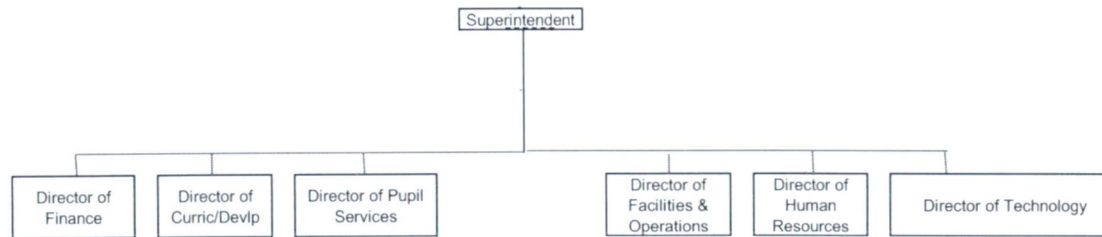
Contact Person Telephone Number

(610)237-9624

Contact Person Fax Number

Interboro School District  
Organization Chart  
2016 - 2017

District Level

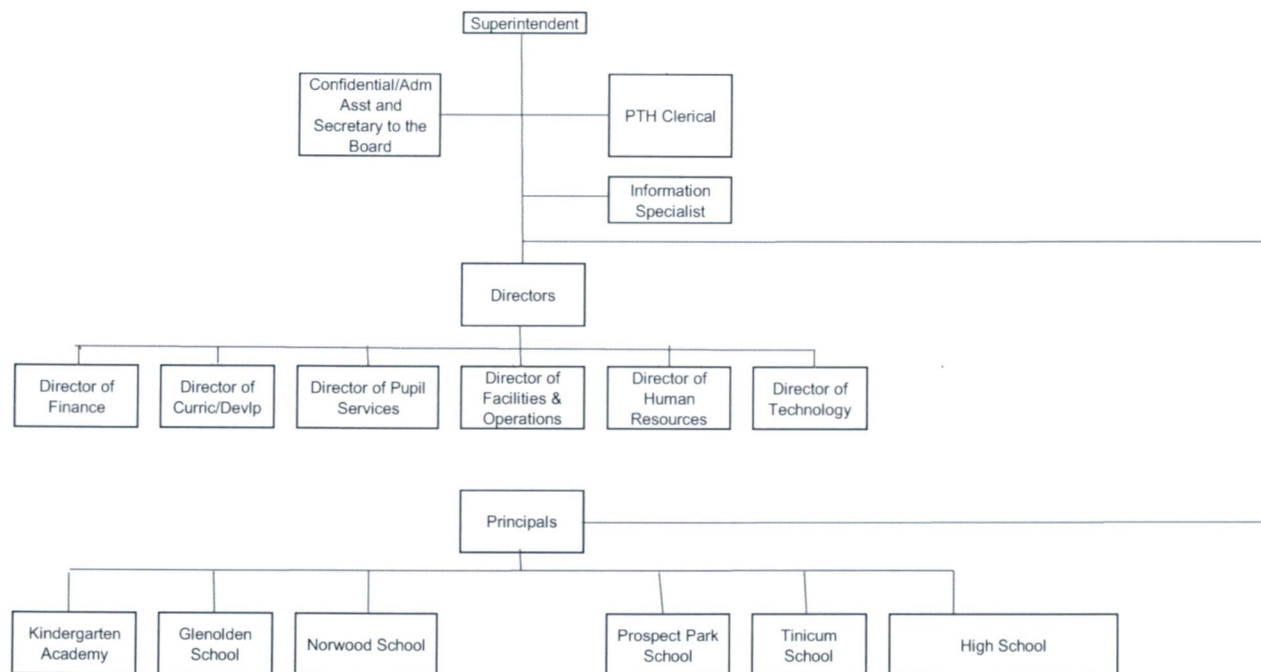




Interboro School District  
Organization Chart  
2016 - 2017

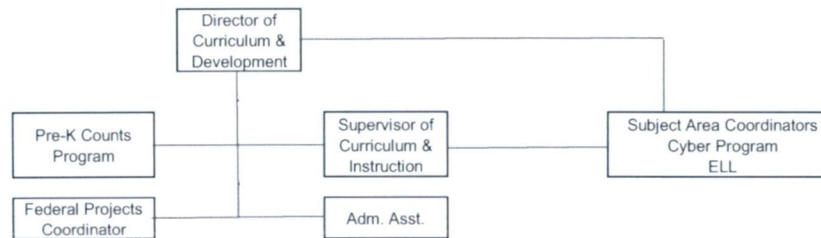
Department Level

Office of Superintendent



Interboro School District  
Organization Chart  
2016 - 2017  
Department Level

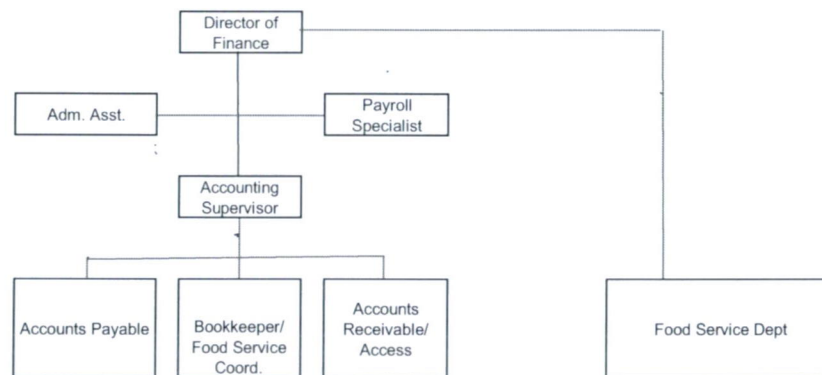
Office of Curriculum and Development



Interboro School District  
Organization Chart  
2016 - 2017

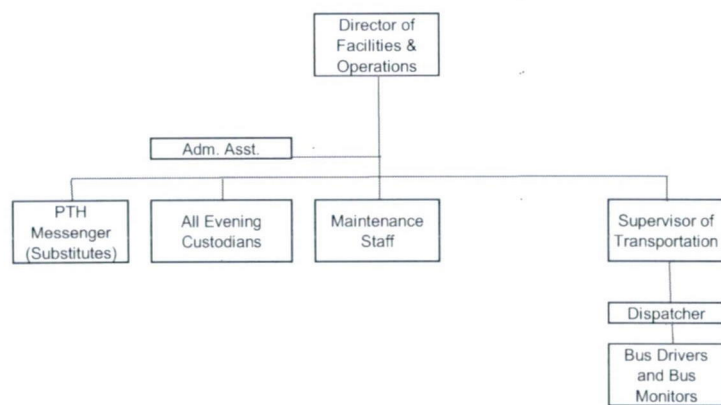
Department Level

Business Office



Interboro School District  
Organization Chart  
2016 - 2017  
Department Level

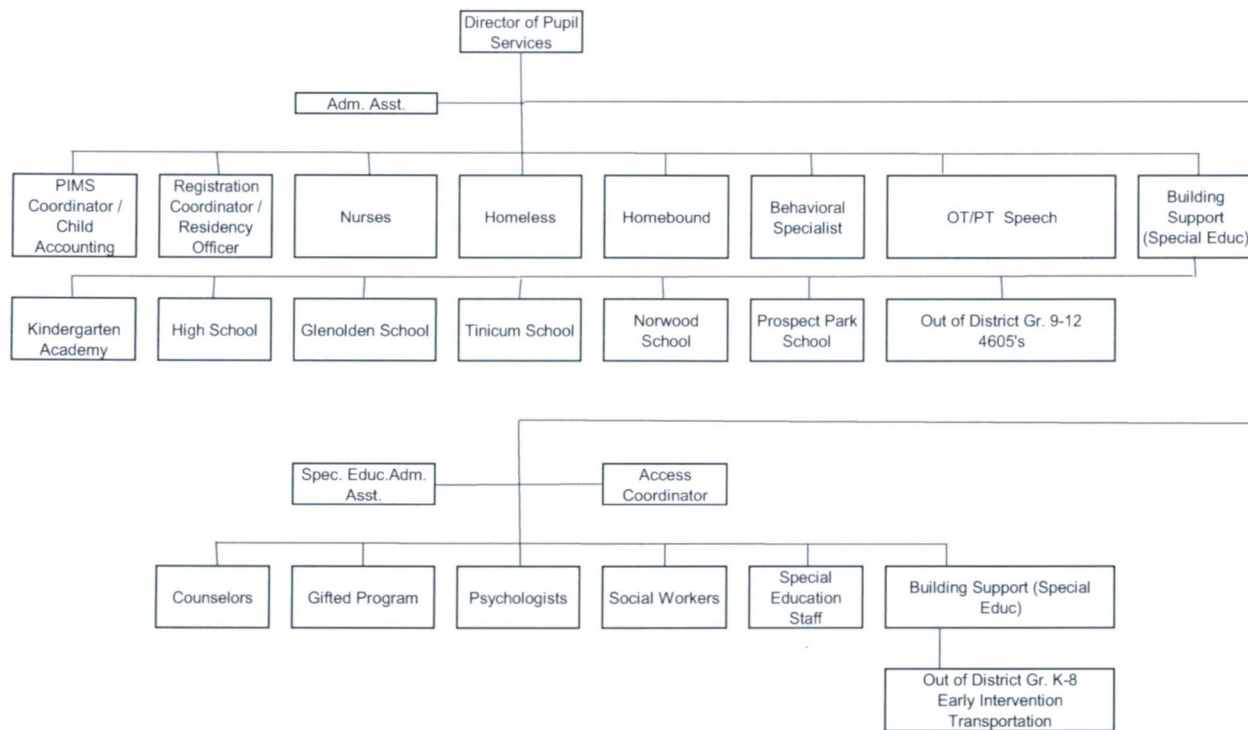
Office of Facilities and Operations



Interboro School District  
 Organization Chart  
 2016 - 2017

Department Level

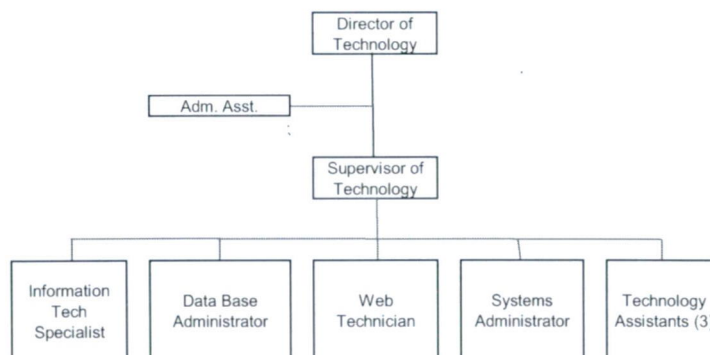
Office of Pupil Services



Interboro School District  
Organization Chart  
2016 - 2017

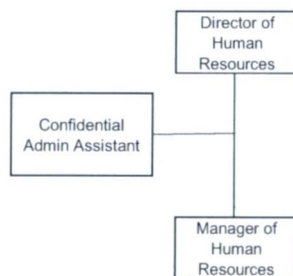
Department Level

Technology Department



Interboro School District  
Organization Chart  
2016 - 2017  
Department Level

Office of Human Resources





<u>Val Number</u>	<u>Description</u>	<u>Justification</u>
12195	REG: Current Year AFR Beginning Fund Balance must equal Prior Year AFR Ending Fund Balance. Justifications to this error must fully explain the situation that prompted a fund balance restatement. "Auditor Adjustment" is not a sufficient justification.  Total Govt Funds, Beg Bal: \$6,687,940.00 PY Ending Bal, Govt Funds: \$6,783,311.00	Adjustment was made to deferred revenue (liability) of \$95,371 (\$83,675 original balance, \$179,046 revised balance). This decreased revenue by \$95,371 which affected the ending Fund Balance by \$95,371. This was a result of the independent audit.
12196	REG - Fund 10: Current Year AFR Beginning Fund Balance must equal Prior Year AFR Ending Fund Balance. Justifications to this error must fully explain the situation that prompted a fund balance restatement. "Auditor Adjustment" is not a sufficient justification.  REG Fund 10, Beg Fund Bal: \$4,416,553.00 PY Ending Fund Balance: \$4,511,924.00	Adjustment was made to deferred revenue (liability) of \$95,371 (\$83,675 original balance, \$179,046 revised balance). This decreased revenue by \$95,371 which affected the ending Fund Balance by \$95,371. This was a result of the independent audit.
42420	Expenditure Detail: Total current year 2700-513 expenditure varies from prior year by 10%. Correct the data or enter a justification.  2700-513, AFR Exp Detail: \$377,850.00 2700-513, PY AFR Amount: \$0.00	2017-2018 was the first year of a third party contract to provide transportation for certain special education students.
50250	SOIN: No ending long term liability has been reported for Governmental Fund - Other Post Employment Benefits (OPEB). Correct data or verify that the LEA does not offer any type of OPEB to employees.	As in prior years there should not be any long term liability for OPEB to report.
50450	SESS - 2350 Legal and Accounting Services: SESS Schedule amounts for Special Education vary from prior year by 40% or more. Correct the data or enter a justification.  SESS Schedule 2350: \$56,519.89 Prior Year SESS Schedule 2350: \$15,000.00	Legal fees for special education due process cases and hearings have continued to increase over the past two years.
50460	SESS - 2420 Medical Services: SESS Schedule amounts for Special Education vary from prior year by 40% or more. Correct the data or enter a justification.  SESS Schedule 2420: \$34,750.60 Prior Year SESS Schedule 2420: \$14,932.96	There was an increase in 2017-2018 in the costs of substitute nursing services.
50480	SESS - 2700 Student Transportation Services: SESS Schedule amounts for Special Education vary from prior year by 40% or more. Correct the data or enter a justification.  SESS Schedule 2700: \$803,376.01 Prior Year SESS Schedule 2700: \$561,298.77	2017-2018 was the first year of a third party contract to provide transportation for certain special education students.

LEA : 125235103 Interboro SD

Printed 11/8/2018 2:02:40 PM

Page - 1 of 4

Amounts Expressed in Whole Dollars	<u>General Fund</u> (10)	<u>Public Purpose Trust</u> (27)	<u>Other Compt Approved</u> (28)	<u>Athletic / Activity</u> (29)	<u>Capital Reserve (690.</u> <u>1850)</u> (31)
<b>Assets And Deferred Outflows Of Resources</b>					
<b>Assets</b>					
0100 Cash and Cash Equivalents	7,966,435				
0110 Investments					
0120 Taxes Receivable	2,133,280				
0130 Due From Other Funds	119,573				
0141 Due From Other Governments	17,224				
0142 State Revenue Receivable	2,178,819				
0143 Federal Revenue Receivable	46,867				
0145 Other Intergovernmental Revenue Receivable					
0146 Due from Primary Government					
0147 Due from Component Unit					
0150 Other Receivables	53,655				
0170 Inventories	2,245				
0180 Prepaid Expenses (Expenditures)	407,593				
0190 Other Current Assets					
<b>Total Assets</b>	<b>\$12,925,691</b>				
0910 Deferred Outflows of Resources					
<b>Total Assets And Deferred Outflows Of Resources</b>	<b>\$12,925,691</b>				

LEA : 125235103 Interboro SD

Printed 11/8/2018 2:02:40 PM

Page - 2 of 4

Amounts Expressed in Whole Dollars		<u>Capital Reserve (1431)</u> (32)	<u>Other Capital Projects</u> <u>Fund</u> (39)	<u>Debt Service</u> (40)	<u>Permanent</u> (90)	<u>Total Governmental</u> <u>Funds</u>
<b>Assets And Deferred Outflows Of Resources</b>						
<b>Assets</b>						
0100	Cash and Cash Equivalents	832	106,999			8,074,266
0110	Investments					
0120	Taxes Receivable					2,133,280
0130	Due From Other Funds					119,573
0141	Due From Other Governments					17,224
0142	State Revenue Receivable					2,178,819
0143	Federal Revenue Receivable					46,867
0145	Other Intergovernmental Revenue Receivable					
0146	Due from Primary Government					
0147	Due from Component Unit					
0150	Other Receivables					53,655
0170	Inventories					2,245
0180	Prepaid Expenses (Expenditures)					407,593
0190	Other Current Assets					
<b>Total Assets</b>		<b>\$832</b>	<b>\$106,999</b>			<b>\$13,033,522</b>
0910	Deferred Outflows of Resources					
<b>Total Assets And Deferred Outflows Of Resources</b>		<b>\$832</b>	<b>\$106,999</b>			<b>\$13,033,522</b>

LEA : 125235103 Interboro SD

Printed 11/8/2018 2:02:40 PM

Page - 3 of 4

Amounts Expressed in Whole Dollars	General Fund (10)	Public Purpose Trust (27)	Other Compt Approved (28)	Athletic / Activity (29)	Capital Reserve (690, 1850) (31)
<b>Liabilities And Deferred Inflows Of Resources And Fund Balances</b>					
<b>Liabilities</b>					
0400 Due to Other Funds					
0411 Due to Other Governments					
0412 Due to Primary Government					
0413 Due to Component Unit					
0420 Accounts Payable	793,406				
0430 Contracts Payable					
0440 Current Portion of Long-Term Debt					
0450 Short-Term Payables					
0461 Accrued Salaries and Benefits	762,566				
0462 Payroll Deductions and Withholding	5,599,688				
0480 Unearned Revenues	169,361				
0490 Other Current Liabilities	7,919				
<b>Total Liabilities</b>	<b>\$7,332,940</b>				
0950 Deferred Inflows of Resources	1,676,054				
<b>Fund Balances</b>					
0810 Nonspendable Fund Balance	409,838				
0820 Restricted Fund Balance	440,686				
0830 Committed Fund Balance	795,267				
0840 Assigned Fund Balance					
0850 Unassigned Fund Balance	2,270,906				
<b>Total Fund Balances</b>	<b>\$3,916,697</b>				
<b>Total Liabilities, Deferred Inflows Of Resources And Fund Balances</b>	<b>\$12,925,691</b>				



Amounts Expressed in Whole Dollars	Capital Reserve (1431) (32)	Other Capital Projects Fund (39)	Debt Service (40)	Permanent (90)	Total Governmental Funds
<b>Liabilities And Deferred Inflows Of Resources And Fund Balances</b>					
<b>Liabilities</b>					
0400 Due to Other Funds					
0411 Due to Other Governments					
0412 Due to Primary Government					
0413 Due to Component Unit					
0420 Accounts Payable					793,406
0430 Contracts Payable					
0440 Current Portion of Long-Term Debt					
0450 Short-Term Payables					
0461 Accrued Salaries and Benefits					762,566
0462 Payroll Deductions and Withholding					5,599,688
0480 Unearned Revenues					169,361
0490 Other Current Liabilities					7,919
<b>Total Liabilities</b>					<b>\$7,332,940</b>
0950 Deferred Inflows of Resources					1,676,054
<b>Fund Balances</b>					
0810 Nonspendable Fund Balance					409,838
0820 Restricted Fund Balance	832				441,518
0830 Committed Fund Balance					795,267
0840 Assigned Fund Balance		106,999			106,999
0850 Unassigned Fund Balance					2,270,906
<b>Total Fund Balances</b>	<b>\$832</b>	<b>\$106,999</b>			<b>\$4,024,528</b>
<b>Total Liabilities, Deferred Inflows Of Resources And Fund Balances</b>	<b>\$832</b>	<b>\$106,999</b>			<b>\$13,033,522</b>

Amounts Expressed in Whole Dollars	General Fund (10)	Public Purpose Trust (27)	Other Compt Approved (28)	Athletic / Activity (29)	Capital Reserve (690, 1850) (31)
<b>Revenues</b>					
6000 Revenue from Local Sources	42,031,529				
7000 Revenue from State Sources	21,813,938				
8000 Revenue from Federal Sources	901,951				
<b>Total Revenues</b>	<b>\$64,747,418</b>				
<b>Expenditures</b>					
1000 Instruction	40,595,173				
2000 Support Services	19,364,453				
3000 Operation of Non-Instructional Services	975,295				
4000 Facilities Acquisition, Construction and Improvement Services	34,083				
5110 Debt Service	4,278,270				
5130 Refund of Prior Year Revenues / Receipts					
<b>Total Expenditures</b>	<b>\$65,247,274</b>				
<b>Excess (Deficiency) Of Revenues Over Expenditures</b>	<b>(\$499,856)</b>				
<b>Other Financing Sources (Uses)</b>					
9110 Face Value of Bonds Issued					
9120 Proceeds from Refunding of Bonds					
9130 Bond Premiums					
9200 Proceeds from Extended-Term Financing					
9300 Interfund Transfers - IN					
9400 Sale of or Compensation for Loss of Fixed Assets					
9710 Transfers from Component Units					
9720 Transfers from Primary Governments					
9910 Other Financing Sources Not Listed in the 9000 Series					
9990 Insurance Recoveries					
5120 Debt Service – Refunded Bonds					
5150 Bond Discounts					
5200 Interfund Transfers – Out					
5300 Transfers Out to Component Units/Primary Governments					
<b>Total Other Financing Sources (Uses)</b>					

Amounts Expressed in Whole Dollars		<u>Capital Reserve (1431)</u> (32)	<u>Other Capital Projects</u> <u>Fund</u> (39)	<u>Debt Service</u> (40)	<u>Permanent</u> (90)	<u>Total Governmental</u> <u>Funds</u>
<b>Revenues</b>						
6000	Revenue from Local Sources		110			42,031,639
7000	Revenue from State Sources					21,813,938
8000	Revenue from Federal Sources					901,951
<b>Total Revenues</b>			<b>\$110</b>			<b>\$64,747,528</b>
<b>Expenditures</b>						
1000	Instruction					40,595,173
2000	Support Services					19,364,453
3000	Operation of Non-Instructional Services					975,295
4000	Facilities Acquisition, Construction and Improvement Services	104,988	2,058,678			2,197,749
5110	Debt Service					4,278,270
5130	Refund of Prior Year Revenues / Receipts					
<b>Total Expenditures</b>		<b>\$104,988</b>	<b>\$2,058,678</b>			<b>\$67,410,940</b>
<b>Excess (Deficiency) Of Revenues Over Expenditures</b>		<b>(\$104,988)</b>	<b>(\$2,058,568)</b>			<b>(\$2,663,412)</b>
<b>Other Financing Sources (Uses)</b>						
9110	Face Value of Bonds Issued					
9120	Proceeds from Refunding of Bonds					
9130	Bond Premiums					
9200	Proceeds from Extended-Term Financing					
9300	Interfund Transfers - IN					
9400	Sale of or Compensation for Loss of Fixed Assets					
9710	Transfers from Component Units					
9720	Transfers from Primary Governments					
9910	Other Financing Sources Not Listed in the 9000 Series					
9990	Insurance Recoveries					
5120	Debt Service – Refunded Bonds					
5150	Bond Discounts					
5200	Interfund Transfers – Out					
5300	Transfers Out to Component Units/Primary Governments					
<b>Total Other Financing Sources (Uses)</b>						



Amounts Expressed in Whole Dollars

	<u>General Fund</u> (10)	<u>Public Purpose Trust</u> (27)	<u>Other Compt Approved</u> (28)	<u>Athletic / Activity</u> (29)	<u>Capital Reserve</u> (690, 1850) (31)
<b>Special And Extraordinary Items</b>					
9920 Special Items – Gains					
9930 Extraordinary Items – Gains					
5520 Special Items – Losses					
5530 Extraordinary Items – Losses					
<b>Net Change In Fund Balances</b>	<b>(\$499,856)</b>				
<b>Fund Balance</b>					
0001 Fund Balance - Beginning of Fiscal Year	4,416,553				
<b>Fund Balance - End Of Year</b>	<b>\$3,916,697</b>				

Amounts Expressed in Whole Dollars	<u>Capital Reserve (1431)</u> (32)	<u>Other Capital Projects</u> <u>Fund</u> (39)	<u>Debt Service</u> (40)	<u>Permanent</u> (90)	<u>Total Governmental</u> <u>Funds</u>
<b>Special And Extraordinary Items</b>					
9920 Special Items – Gains					
9930 Extraordinary Items – Gains					
5520 Special Items – Losses					
5530 Extraordinary Items – Losses					
<b>Net Change In Fund Balances</b>	<b>(\$104,988)</b>	<b>(\$2,058,568)</b>			<b>(\$2,663,412)</b>
<b>Fund Balance</b>					
0001 Fund Balance - Beginning of Fiscal Year	105,820	2,165,567			6,687,940
<b>Fund Balance - End Of Year</b>	<b>\$832</b>	<b>\$106,999</b>			<b>\$4,024,528</b>

Amounts Expressed in Whole Dollars	<u>Food Service</u> (51)	<u>Child Care</u> <u>Operations</u> (52)	<u>Other Enterprise</u> (58)	<u>TOTAL</u>	<u>Internal Service</u> (60)
<b>Assets And Deferred Outflows Of Resources</b>					
<b>Current Assets</b>					
0100 Cash and Cash Equivalents	3,152			3,152	
0110 Investments					
0130 Due From Other Funds					
0141 Due From Other Governments					
0142 State Revenue Receivable	1,283			1,283	
0143 Federal Revenue Receivable	25,242			25,242	
0146 Due from Primary Government					
0147 Due from Component Unit					
0150 Other Receivables					
0170 Inventories	5,659			5,659	
0180 Prepaid Expenses (Expenditures)					
0190 Other Current Assets					
<b>Total Current Assets</b>	<b>\$35,336</b>			<b>\$35,336</b>	
<b>Noncurrent Assets</b>					
0211 Land					
0212 Site Improvements (Net)					
0220 Buildings and Building Improvements (Net)					
0230 Machinery, Equipment and Furniture (Net)	458,045			458,045	
0250 Construction in Progress					
0260 Long Term Prepayments					
0290 Other Noncurrent Assets					
<b>Total Noncurrent Assets</b>	<b>\$458,045</b>			<b>\$458,045</b>	
0910 Deferred Outflows of Resources					
<b>Total Assets And Deferred Outflows Of Resources</b>	<b>\$493,381</b>			<b>\$493,381</b>	

## Amounts Expressed in Whole Dollars

	<u>Food Service</u> (51)	<u>Child Care</u> <u>Operations</u> (52)	<u>Other Enterprise</u> (58)	<u>TOTAL</u>	<u>Internal Service</u> (60)
<b>Liabilities And Deferred Inflows Of Resources And Net Position</b>					
<b>Current Liabilities</b>					
0400 Due to Other Funds	119,573			119,573	
0411 Due to Other Governments					
0413 Due to Component Unit					
0420 Accounts Payable	43,967			43,967	
0430 Contracts Payable					
0440 Current Portion of Long-Term Debt	15,000			15,000	
0450 Short-Term Payables					
0461 Accrued Salaries and Benefits					
0462 Payroll Deductions and Withholding					
0480 Unearned Revenues	23,523			23,523	
0490 Other Current Liabilities					
<b>Total Current Liabilities</b>	<b>\$202,063</b>			<b>\$202,063</b>	
<b>Noncurrent Liabilities</b>					
0510 Bonds Payable					
0520 Extended-Term Financing Agreements Payable					
0530 Lease-Purchase Obligations					
0540 Accumulated Compensated Absences					
0550 Authority Lease Obligations					
0560 Other Post-Employment Benefits (OPEB)					
0570 Net Pension Liability					
0599 Other Noncurrent Liabilities					
<b>Total Noncurrent Liabilities</b>					
<b>Total Liabilities</b>	<b>\$202,063</b>			<b>\$202,063</b>	
0950 Deferred Inflows of Resources					
<b>Net Position</b>					
0791 Net Investment in Capital Assets	443,045			443,045	
0008 Restricted Net Position (0792 – 0798)					
0799 Unrestricted Net Position	(151,727)			(151,727)	
<b>Total Net Position</b>	<b>\$291,318</b>			<b>\$291,318</b>	
<b>Total Liabilities And Deferred Inflows Of Resources And Net Position</b>	<b>\$493,381</b>			<b>\$493,381</b>	



Amounts Expressed in Whole Dollars	Food Service (51)	Child Care Operations (52)	Other Enterprise (58)	TOTAL	Internal Service (60)
<b>Operating Revenues</b>					
6600 Food Service Revenue	464,731			464,731	
0071 Charges for Services					
0072 Other Operating Revenue					
<b>Total Operating Revenues</b>	<b>\$464,731</b>			<b>\$464,731</b>	
<b>Operating Expenses</b>					
100 Personnel Services – Salaries	8,435			8,435	
200 Personnel Services – Employee Benefits	2,343			2,343	
300 Purchased Professional and Technical Services					
400 Purchased Property Services	37,932			37,932	
500 Other Purchased Services	1,098,174			1,098,174	
600 Supplies	106,237			106,237	
740 Depreciation	50,300			50,300	
810 Dues and Fees	600			600	
890 Miscellaneous Expenditures	774			774	
<b>Total Operating Expenses</b>	<b>\$1,304,795</b>			<b>\$1,304,795</b>	
<b>Operating Income (Loss)</b>	<b>(\$840,064)</b>			<b>(\$840,064)</b>	
<b>Non Operating Revenues (Expenses)</b>					
6500 Earnings on Investments					
6920 Contributions and Donations from Private Sources					
6930 Gains or Losses on Sale of Fixed Assets	500			500	
6991 Refunds of a Prior Year Expenditure					
7000 Revenue from State Sources	38,063			38,063	
8000 Revenue from Federal Sources	850,143			850,143	
820 Claims and Judgments Against the LEA					
830 Interest					
<b>TOTAL Non Operating Revenues (Expenses)</b>	<b>\$888,706</b>			<b>\$888,706</b>	
<b>Income (Loss) Before Contributions And Transfers</b>	<b>\$48,642</b>			<b>\$48,642</b>	

Amounts Expressed in Whole Dollars	<u>Food Service</u> (51)	<u>Child Care Operations</u> (52)	<u>Other Enterprise</u> (58)	<u>TOTAL</u>	<u>Internal Service</u> (60)
<b>Contributions, Transfers, and Special and Extraordinary Items</b>					
5200 Interfund Transfers – Out					
5300 Transfers Out to Component Units/Primary Governments					
5520 Special Items – Losses					
5530 Extraordinary Items – Losses					
9300 Interfund Transfers - IN					
9500 Capital Contributions					
9700 Transfers IN From Component Units/Primary Governments					
9920 Special Items – Gains					
9930 Extraordinary Items – Gains					
<b>Change In Net Position</b>	<b>\$48,642</b>			<b>\$48,642</b>	
0002 Net Position - Beginning of Fiscal Year	242,676			242,676	
0003 Accounting Changes / Residual Equity Transfers					
<b>Net Position - End Of Year</b>	<b>\$291,318</b>			<b>\$291,318</b>	

Amounts Expressed in Whole Dollars	Food Service (51)	Child Care Operations (52)	Other Enterprise (58)	TOTAL	Internal Service(60)
<b>Cash Flows From Operating Activities</b>					
0011 Cash Receipts From Users	459,340			459,340	
0012 Cash Receipts From Assessments Made to Other Funds					
0013 Cash Receipts From Earnings on Investments					
0014 Cash Receipts From Other Operating Revenue					
0015 Cash Payments To Employees For Services	10,778			10,778	
0016 Cash Payments For Insurance Claims					
0017 Cash Payments To Suppliers For Goods and Services	1,346,532			1,346,532	
0018 Cash Payments For Other Operating Expenses					
<b>Net Cash Provided By (Used For) Operating Activities</b>	<b>(\$897,970)</b>			<b>(\$897,970)</b>	
<b>Cash Flows From Non-Capital Financing Activities</b>					
0021 Receipts From Local Sources - 6000	38,252			38,252	
0022 Receipts From State Sources - 7000	852,872			852,872	
0023 Receipts From Federal Sources -8000					
0024 Notes and Loans Received (Repaid)					
0025 Interest Paid on Notes/Loans - 5100-830					
0026 Operating Transfers In (Out)/Residual Equity Trans					
0027 Operating Transfers In (Out) Primary Government / Comp Unit					
0028 Receipts From Refund of Prior Year Expenditures - 6991					
0029 Special and Extraordinary Gains (losses)					
0030 Receipts from Insurance Recoveries -9990					
<b>Net Cash Prov By (Used for) Non-Capital Financing Activities</b>	<b>\$891,124</b>			<b>\$891,124</b>	
<b>Cash Flows From Capital and Related Financing Activities</b>					
0031 Payments For Fac Acq, Const, and Imp - 4000	(3,490)			(3,490)	
0032 Gain / (Loss) on Sale of Fixed Assets - 6930	500			500	
0033 Proceeds From Extended Term Financing - 9200					
0034 Principal Paid on Financing Agreements	(15,000)			(15,000)	
0035 Interest Paid on Financing Agreements - 5100-830					
0036 (Inc) Dec in Contributed Capital					
<b>Net Cash Prov By (Used for) Capital and Related Financing Activities</b>	<b>(\$17,990)</b>			<b>(\$17,990)</b>	
<b>Cash Flows From Investing Activities</b>					
0041 Earnings on Investments - 6500					
0042 Purchase of Inv Securities / Deposits to Inv Pools					
0043 Receipts From Investment Pool Withdrawals					
0044 Proceeds from Sale and Maturity of Inv Securities					



0045   Loans Received (Paid)

**Net Cash Prov By (Used for) Investing Activities**

	<u>Food Service</u> (51)	<u>Child Care Operations</u> (52)	<u>Other Enterprise</u> (58)	<u>TOTAL</u>	<u>Internal Service</u> (60)
<b>Net Increase (Decrease) in Cash Flows</b>	(24,836)			(24,836)	
0004 Cash and Cash Equivalents Beginning of Year	27,988			27,988	
<b>Cash and Cash Equivalents at Year End</b>	<b>\$3,152</b>			<b>\$3,152</b>	
<hr/>					
<b>Reconciliation of Operating Income (Loss) To Net Cash Provided by (Used For) Operating Activities</b>					
0005 Operating Income (Loss) per REP	(840,064)			(840,064)	
<b>Adjustments</b>					
0051 Depreciation and Net Amortization	50,300			50,300	
0052 Provision for Uncollectible Accounts					
0053 Other Adjustments					
<b>Effect of Changes in Assets, Liabilities, Deferred Outflows and Deferred Inflows</b>					
0054 (Inc) Dec In Accounts Receivable (0120-0150)					
0055 Advances to Other Funds (0160)					
0056 (Inc) Dec in Inventories (0170)	(7,893)			(7,893)	
0057 (Inc) Dec in Prepaid Expenses (0180)					
0058 (Inc) Dec in Other Current or Noncurrent Assets					
0064 Deferred Outflows (0910)					
0059 Inc (Dec) in Accounts Payable (0400-0450)	(6,953)			(6,953)	
0060 Inc (Dec) in Accrued Salaries/Benefits (0461)					
0065 Inc (Dec) in Net Pension Liabilities (0570)					
0066 Inc (Dec) in Other Postemp Benefit Oblig (0560)					
0061 Inc (Dec) in Payroll Deductions/Withholding (0462)					
0062 Inc (Dec) in Unearned Revenue (0480)	(5,391)			(5,391)	
0063 Inc (Dec) in Other Current or Noncurrent Liabilities	(103,755)			(103,755)	
0067 Deferred Inflows (0950)					
<b>Total Adjustments</b>	<b>(\$73,692)</b>			<b>(\$73,692)</b>	
<b>Cash Provided By (Used for) Total</b>	<b>(\$913,756)</b>			<b>(\$913,756)</b>	

COMBINED STATEMENT OF CASH FLOWS  
SCHEDULE OF NONCASH INVESTING, CAPITAL, AND FINANCING ACTIVITIES

Explanation of Transaction and Balance Sheet Effect	Amount
Donated commodities received	92,679
Total	\$92,679

LEA : 125235103 Interboro SD

Printed 11/8/2018 2:02:54 PM

Page - 1 of 4

Amounts Expressed in Whole Dollars	<u>Private Purpose Trust</u> (71)	<u>Investment Trust</u> (72)	<u>Pension Trust</u> (73)	<u>Activity</u> (81)
<b>Assets And Deferred Outflows Of Resources</b>				
<b>Assets</b>				
0100 Cash and Cash Equivalents	43,255			94,139
0110 Investments				
0130 Due From Other Funds				
0147 Due from Component Unit				
0150 Other Receivables				
0170 Inventories				
0180 Prepaid Expenses (Expenditures)				
0190 Other Current Assets				
0220 Buildings and Building Improvements (Net)				
0230 Machinery, Equipment and Furniture (Net)				
<b>Total Assets</b>	<b>\$43,255</b>			<b>\$94,139</b>
0910 Deferred Outflows of Resources				
<b>Total Assets And Deferred Outflows Of Resources</b>	<b>\$43,255</b>			<b>\$94,139</b>

LEA : 125235103 Interboro SD

Printed 11/8/2018 2:02:54 PM

Page - 2 of 4

Amounts Expressed in Whole Dollars	<u>Other Agency</u> (89)	<u>Discrete Component Units</u> (98)	<u>Discrete Component Units</u> (99)	<u>Total Fiduciary Funds</u>
<b>Assets And Deferred Outflows Of Resources</b>				
<b>Assets</b>				
0100 Cash and Cash Equivalents				137,394
0110 Investments				
0130 Due From Other Funds				
0147 Due from Component Unit				
0150 Other Receivables				
0170 Inventories				
0180 Prepaid Expenses (Expenditures)				
0190 Other Current Assets				
0220 Buildings and Building Improvements (Net)				
0230 Machinery, Equipment and Furniture (Net)				
<b>Total Assets</b>				<b>\$137,394</b>
0910 Deferred Outflows of Resources				
<b>Total Assets And Deferred Outflows Of Resources</b>				<b>\$137,394</b>

LEA : 125235103 Interboro SD

Printed 11/8/2018 2:02:54 PM

Page - 3 of 4

Amounts Expressed in Whole Dollars	<u>Private Purpose Trust</u> (71)	<u>Investment Trust</u> (72)	<u>Pension Trust</u> (73)	<u>Activity</u> (81)
<b>Liabilities, Deferred Inflows Of Resources And Net Position</b>				
<b>Liabilities</b>				
0400 Due to Other Funds				
0411 Due to Other Governments				
0412 Due to Primary Government				
0413 Due to Component Unit				
0420 Accounts Payable				9,675
0430 Contracts Payable				
0450 Short-Term Payables				
0461 Accrued Salaries and Benefits				
0462 Payroll Deductions and Withholding				
0480 Unearned Revenues				
0490 Other Current Liabilities				84,464
<b>Total Liabilities</b>				<b>\$94,139</b>
0950 Deferred Inflows of Resources				
<b>Net Position</b>				
0791 Net Investment in Capital Assets				
0009 Restricted Net Position (0792 – 0798)	43,255			
0799 Unrestricted Net Position				
<b>Total Net Position</b>	<b>\$43,255</b>			
<b>Total Liabilities, Deferred Inflows Of Resources And Net Position</b>	<b>\$43,255</b>			<b>\$94,139</b>



LEA : 125235103 Interboro SD

Printed 11/8/2018 2:02:54 PM

Page - 4 of 4

Amounts Expressed in Whole Dollars

Other Agency  
(89)Discrete Component Units  
(98)Discrete Component Units  
(99)Total Fiduciary Funds**Liabilities, Deferred Inflows Of Resources And Net Position****Liabilities**

0400 Due to Other Funds			
0411 Due to Other Governments			
0412 Due to Primary Government			
0413 Due to Component Unit			
0420 Accounts Payable			9,675
0430 Contracts Payable			
0450 Short-Term Payables			
0461 Accrued Salaries and Benefits			
0462 Payroll Deductions and Withholding			
0480 Unearned Revenues			
0490 Other Current Liabilities			84,464

**Total Liabilities****\$94,139**

0950 Deferred Inflows of Resources

**Net Position**

0791 Net Investment in Capital Assets			
0009 Restricted Net Position (0792 – 0798)			43,255
0799 Unrestricted Net Position			

**Total Net Position****\$43,255****Total Liabilities, Deferred Inflows Of Resources And Net Position****\$137,394**



LEA : 125235103 Interboro SD

Printed 11/8/2018 2:02:54 PM

Page - 1 of 1

Amounts Expressed in Whole Dollars	<u>Private Purpose Trust</u> (71)	<u>Investment Trust</u> (72)	<u>Pension Trust</u> (73)	<u>Discrete Component</u> <u>Units</u> (98)	<u>Discrete Component</u> <u>Units</u> (99)	<u>Total Fiduciary</u> <u>Funds</u>
<b>Additions</b>						
0091 Gifts and Contributions	38,855					38,855
0092 Other Additions						
<b>Deductions</b>						
0093 Scholarships Awarded	43,600					43,600
0094 Other Deductions						
<b>Change In Net Position</b>	<b>(\$4,745)</b>					<b>(\$4,745)</b>
0006 Net Position – Beginning of Fiscal Year	48,000					48,000
0007 Net Position Held in Trust for Pension Benefits						
<b>Net Position - End of Fiscal Year</b>	<b>\$43,255</b>					<b>\$43,255</b>

	Revenue Reported In Current Year	Current Year Tax Accrual	Prior Year Tax Accrual	Taxes Collected In Current Year
<b>Revenue from Local Sources</b>				
6111 Current Real Estate Taxes	37,610,011.33			37,610,011.33
6112 Interim Real Estate Taxes	25,895.45			25,895.45
6113 Public Utility Realty Taxes	39,339.75			39,339.75
6114 Payments in Lieu of Current Taxes - State / Local	216,758.20			216,758.20
6115 Payments in Lieu of Current Taxes - Federal	4,484.00			4,484.00
6153 Current Act 511 Real Estate Transfer Taxes	522,679.35	142,245.27	19,905.42	400,339.50
6159 Current Act 511 Taxes, Other Proportional Assessments	568,984.83	56,688.47	60,928.19	573,224.55
6411 Delinquent Real Estate Taxes	1,197,727.61	258,292.92	167,936.38	1,107,371.07
6500 Earnings on Investments	17,626.31			
6700 Revenues from LEA Activities	61,184.54			
6832 Federal IDEA Revenue Received as Pass Through	645,040.00			
6910 Rentals	4,750.00			
6920 Contributions and Donations from Private Sources	11,654.29			
6942 Summer School Tuition	16,005.00			
6991 Refunds of a Prior Year Expenditure	292,230.38			
6992 Energy Efficiency Revenues and Incentives	7,865.41			
6999 Other Revenues Not Specified Above	789,292.67			
<b>TOTAL Revenue from Local Sources</b>	<b>\$42,031,529.12</b>	<b>\$457,226.66</b>	<b>\$248,769.99</b>	<b>\$39,977,423.85</b>

	Revenue Reported In Current Year
<b>Revenue from State Sources</b>	
7110 Basic Education Funding	8,893,494.82
7160 Tuition for Orphans Subsidy	26,708.16
7271 Special Education funds for School-Aged Pupils	2,209,388.87
7292 Pre-K Counts	68,000.00
7311 Pupil Transportation Subsidy	464,687.15
7312 Nonpublic and Charter School Pupil Transportation Subsidy	77,000.00
7320 Rental and Sinking Fund Payments / Building Reimbursement Subsidy	445,586.68
7330 Health Services (Medical, Dental, Nurse, Act 25)	60,112.18
7340 State Property Tax Reduction Allocation	2,021,224.01
7505 Ready to Learn Block Grant	554,903.00
7810 State Share of Social Security and Medicare Taxes	1,314,976.16
7820 State Share of Retirement Contributions	5,677,857.17
<b>TOTAL Revenue from State Sources</b>	<b>\$21,813,938.20</b>

	Revenue Reported In Current Year			
<b>Revenue from Federal Sources</b>				
8514 NCLB, Title I - Improving the Academic Achievement of the Disadvantaged	770,591.80			
8515 NCLB, Title II - Preparing, Training and Recruiting High Quality Teachers and Principals	111,958.19			
8517 NCLB, Title IV - 21St Century Schools	11,466.00			
8610 Homeless Assistance Act	53.17			
8810 School-Based Access Medicaid Reimbursement Program (SBAP) Reimbursements (Access)	7,881.37			
<b>TOTAL Revenue from Federal Sources</b>	<b>\$901,950.53</b>			
<b>TOTAL FROM ALL SOURCES</b>	<b>\$64,747,417.85</b>	<b>\$457,226.66</b>	<b>\$248,769.99</b>	<b>\$39,977,423.85</b>

Revenue from Local Sources	42,031,529.12
Revenue from State Sources	21,813,938.20
Revenue from Federal Sources	901,950.53
Other Financing Sources	
<b>TOTAL FROM ALL SOURCES</b>	<b>\$64,747,417.85</b>



LEA : 125235103 Interboro SD

Printed 11/8/2018 2:02:58 PM

Page - 1 of 25

## General Fund (10)

## 1000 Instruction

Total100 Personnel Services – Salaries

100 Personnel Services – Salaries	21,956,333.07
-----------------------------------	---------------

**Total Personnel Services – Salaries****\$21,956,333.07**200 Personnel Services – Employee Benefits

210 Group Insurance – Contracted Provider	3,119,568.23
---	--------------

220 Social Security Contributions	1,663,390.87
-----------------------------------	--------------

230 PSERS Retirement Contributions	6,933,087.64
------------------------------------	--------------

250 Unemployment Compensation	23,422.66
-------------------------------	-----------

260 Workers' Compensation	241,404.68
---------------------------	------------

270 Group Insurance – Self-Insurance	947,034.11
--------------------------------------	------------

280 Other Post-Employment Benefits (OPEB)	190,679.39
---	------------

291 Other Retirement Plans	71,726.44
----------------------------	-----------

**Total Personnel Services – Employee Benefits****\$13,190,314.02**300 Purchased Professional and Technical Services

322 Professional Educational Services – Ius	882,385.49
---	------------

323 Professional Educational Services – Other Educational Agencies	400.00
--	--------

324 Professional Educational Services – Employee Training and Development Services	23,795.78
--	-----------

329 Professional Educational Services – Other	56,836.98
---	-----------

330 Other Professional Services	52,170.37
---------------------------------	-----------

**Total Purchased Professional and Technical Services****\$1,015,588.62**400 Purchased Property Services

430 Repairs and Maintenance Services	7,760.23
--------------------------------------	----------

440 Rentals	185,796.62
-------------	------------

**Total Purchased Property Services****\$193,556.85**500 Other Purchased Services

530 Communications	9,393.98
--------------------	----------

561 Tuition To Other School Districts Within the State	153,774.27
--	------------

562 Tuition To Pennsylvania Charter Schools	526,741.26
---	------------

563 Tuition To Nonpublic Schools	268,003.53
----------------------------------	------------

564 Tuition To Career and Technology Centers	1,036,796.00
--	--------------

566 Tuition To Institutions of Higher Education and Technical Institutes	359,560.00
--	------------

567 Tuition To Approved Private Schools (APS) and PA Chartered Schools for the Deaf and Blind	546,537.93
---	------------

568 Tuition To Private Residential Rehabilitative Institutions (PRRI) [In-State] and Detention Centers	254,879.44
--	------------

569 Tuition – Other	254.08
---------------------	--------

580 Travel	410.68
------------	--------

591 Services Purchased Locally	2,953.00
--------------------------------	----------

597 Direct Payments To Intermediate Units for Institutionalized Childrens' Program	198,543.27
--	------------

**Total Other Purchased Services****\$3,357,847.44**600 Supplies

610 General Supplies	340,348.68
----------------------	------------

630 Food	747.74
----------	--------

640 Books and Periodicals	189,155.99
---------------------------	------------

650 Supplies & Fees – Technology Related	109,779.01
--	------------

## General Fund (10)

## 1000 Instruction

	<u>Total</u>
<b>Total Supplies</b>	<b>\$640,031.42</b>
<b>700 <u>Property</u></b>	
752 Capital Equipment – Original and Additional	134,745.85
<b>Total Property</b>	<b>\$134,745.85</b>
<b>800 <u>Other Objects</u></b>	
820 Claims and Judgments Against the LEA	4,432.50
890 Miscellaneous Expenditures	102,323.28
<b>Total Other Objects</b>	<b>\$106,755.78</b>
<b>Total 1000 Instruction</b>	<b>\$40,595,173.05</b>



LEA : 125235103 Interboro SD

Printed 11/8/2018 2:02:58 PM

Page - 3 of 25

## General Fund (10)

## 1100 Regular Programs – Elementary / Secondary

	Elementary	Secondary	Federal	Total
<b>100 Personnel Services – Salaries</b>				
100 Personnel Services – Salaries	7,082,579.60	9,402,245.44	330,625.40	16,815,450.44
<b>Total Personnel Services – Salaries</b>	<b>\$7,082,579.60</b>	<b>\$9,402,245.44</b>	<b>\$330,625.40</b>	<b>\$16,815,450.44</b>
<b>200 Personnel Services – Employee Benefits</b>				
210 Group Insurance – Contracted Provider	1,114,420.90	1,282,663.10	49,374.95	2,446,458.95
220 Social Security Contributions	536,275.87	713,744.77	25,138.73	1,275,159.37
230 PSERS Retirement Contributions	2,247,107.70	2,957,547.99	107,685.08	5,312,340.77
250 Unemployment Compensation	7,700.51	9,949.08	330.91	17,980.50
260 Workers' Compensation	80,391.65	102,374.03	2,975.48	185,741.16
270 Group Insurance – Self-Insurance	337,590.07	391,916.80	14,797.46	744,304.33
280 Other Post-Employment Benefits (OPEB)	98,849.39	91,830.00		190,679.39
291 Other Retirement Plans	12,925.00	44,726.44		57,651.44
<b>Total Personnel Services – Employee Benefits</b>	<b>\$4,435,261.09</b>	<b>\$5,594,752.21</b>	<b>\$200,302.61</b>	<b>\$10,230,315.91</b>
<b>300 Purchased Professional and Technical Services</b>				
322 Professional Educational Services – Ius	68,780.63	68,922.45		137,703.08
324 Professional Educational Services – Employee Training and Development Services		12,495.78		12,495.78
329 Professional Educational Services – Other		34,336.00		34,336.00
<b>Total Purchased Professional and Technical Services</b>	<b>\$68,780.63</b>	<b>\$115,754.23</b>		<b>\$184,534.86</b>
<b>400 Purchased Property Services</b>				
430 Repairs and Maintenance Services	237.00	2,893.82		3,130.82
440 Rentals		13,575.62		13,575.62
<b>Total Purchased Property Services</b>	<b>\$237.00</b>	<b>\$16,469.44</b>		<b>\$16,706.44</b>
<b>500 Other Purchased Services</b>				
530 Communications	3,259.68	6,134.30		9,393.98
562 Tuition To Pennsylvania Charter Schools	131,733.40	233,451.07		365,184.47
569 Tuition – Other	20.00			20.00
580 Travel	378.68			378.68
591 Services Purchased Locally			2,953.00	2,953.00
<b>Total Other Purchased Services</b>	<b>\$135,391.76</b>	<b>\$239,585.37</b>	<b>\$2,953.00</b>	<b>\$377,930.13</b>
<b>600 Supplies</b>				
610 General Supplies	69,314.65	109,182.45	118,990.56	297,487.66
640 Books and Periodicals	64,715.75	53,019.16	69,169.18	186,904.09
650 Supplies & Fees – Technology Related	13,380.66	61,851.86	34,247.50	109,480.02
<b>Total Supplies</b>	<b>\$147,411.06</b>	<b>\$224,053.47</b>	<b>\$222,407.24</b>	<b>\$593,871.77</b>
<b>700 Property</b>				
752 Capital Equipment – Original and Additional	27,863.72	43,857.71	63,024.42	134,745.85
<b>Total Property</b>	<b>\$27,863.72</b>	<b>\$43,857.71</b>	<b>\$63,024.42</b>	<b>\$134,745.85</b>
<b>800 Other Objects</b>				
890 Miscellaneous Expenditures		7,447.76		7,447.76
<b>Total Other Objects</b>		<b>\$7,447.76</b>		<b>\$7,447.76</b>
<b>Total 1100 Regular Programs – Elementary / Secondary</b>	<b>\$11,897,524.86</b>	<b>\$15,644,165.63</b>	<b>\$819,312.67</b>	<b>\$28,361,003.16</b>



LEA : 125235103 Interboro SD

Printed 11/8/2018 2:02:58 PM

Page - 4 of 25

## General Fund (10)

## 1110 Regular Programs

	<u>Elementary</u>	<u>Secondary</u>	<u>Federal</u>	<u>Total</u>
<b>100 Personnel Services – Salaries</b>				
100 Personnel Services – Salaries	7,082,579.60	9,402,245.44		16,484,825.04
<b>Total Personnel Services – Salaries</b>	<b>\$7,082,579.60</b>	<b>\$9,402,245.44</b>		<b>\$16,484,825.04</b>
<b>200 Personnel Services – Employee Benefits</b>				
210 Group Insurance – Contracted Provider	1,114,420.90	1,282,663.10		2,397,084.00
220 Social Security Contributions	536,275.87	713,744.77		1,250,020.64
230 PSERS Retirement Contributions	2,247,107.70	2,957,547.99		5,204,655.69
250 Unemployment Compensation	7,700.51	9,949.08		17,649.59
260 Workers' Compensation	80,391.65	102,374.03		182,765.68
270 Group Insurance – Self-Insurance	337,590.07	391,916.80		729,506.87
280 Other Post-Employment Benefits (OPEB)	98,849.39	91,830.00		190,679.39
291 Other Retirement Plans	12,925.00	44,726.44		57,651.44
<b>Total Personnel Services – Employee Benefits</b>	<b>\$4,435,261.09</b>	<b>\$5,594,752.21</b>		<b>\$10,030,013.30</b>
<b>300 Purchased Professional and Technical Services</b>				
322 Professional Educational Services – Ius	68,780.63	68,922.45		137,703.08
324 Professional Educational Services – Employee Training and Development Services		12,495.78		12,495.78
329 Professional Educational Services – Other		34,336.00		34,336.00
<b>Total Purchased Professional and Technical Services</b>	<b>\$68,780.63</b>	<b>\$115,754.23</b>		<b>\$184,534.86</b>
<b>400 Purchased Property Services</b>				
430 Repairs and Maintenance Services	237.00	2,893.82		3,130.82
440 Rentals		13,575.62		13,575.62
<b>Total Purchased Property Services</b>	<b>\$237.00</b>	<b>\$16,469.44</b>		<b>\$16,706.44</b>
<b>500 Other Purchased Services</b>				
530 Communications	3,259.68	6,134.30		9,393.98
562 Tuition To Pennsylvania Charter Schools	131,733.40	233,451.07		365,184.47
569 Tuition – Other	20.00			20.00
580 Travel	378.68			378.68
<b>Total Other Purchased Services</b>	<b>\$135,391.76</b>	<b>\$239,585.37</b>		<b>\$374,977.13</b>
<b>600 Supplies</b>				
610 General Supplies	69,314.65	109,182.45		178,497.10
640 Books and Periodicals	64,715.75	53,019.16		117,734.91
650 Supplies & Fees – Technology Related	13,380.66	61,851.86		75,232.52
<b>Total Supplies</b>	<b>\$147,411.06</b>	<b>\$224,053.47</b>		<b>\$371,464.53</b>
<b>700 Property</b>				
752 Capital Equipment – Original and Additional	27,863.72	43,857.71		71,721.43
<b>Total Property</b>	<b>\$27,863.72</b>	<b>\$43,857.71</b>		<b>\$71,721.43</b>
<b>800 Other Objects</b>				
890 Miscellaneous Expenditures		7,447.76		7,447.76
<b>Total Other Objects</b>		<b>\$7,447.76</b>		<b>\$7,447.76</b>
<b>Total 1110 Regular Programs</b>	<b>\$11,897,524.86</b>	<b>\$15,644,165.63</b>		<b>\$27,541,690.49</b>

LEA : 125235103 Interboro SD

Printed 11/8/2018 2:02:58 PM

Page - 5 of 25

## General Fund (10)

	<u>Elementary</u>	<u>Secondary</u>	<u>Federal</u>	<u>Total</u>
<b>1190 Federally-Funded Regular Programs</b>				
<b>100 Personnel Services – Salaries</b>				
100 Personnel Services – Salaries			330,625.40	330,625.40
<b>Total Personnel Services – Salaries</b>			<b>\$330,625.40</b>	<b>\$330,625.40</b>
<b>200 Personnel Services – Employee Benefits</b>				
210 Group Insurance – Contracted Provider			49,374.95	49,374.95
220 Social Security Contributions			25,138.73	25,138.73
230 PSERS Retirement Contributions			107,685.08	107,685.08
250 Unemployment Compensation			330.91	330.91
260 Workers' Compensation			2,975.48	2,975.48
270 Group Insurance – Self-Insurance			14,797.46	14,797.46
<b>Total Personnel Services – Employee Benefits</b>			<b>\$200,302.61</b>	<b>\$200,302.61</b>
<b>500 Other Purchased Services</b>				
591 Services Purchased Locally			2,953.00	2,953.00
<b>Total Other Purchased Services</b>			<b>\$2,953.00</b>	<b>\$2,953.00</b>
<b>600 Supplies</b>				
610 General Supplies			118,990.56	118,990.56
640 Books and Periodicals			69,169.18	69,169.18
650 Supplies & Fees – Technology Related			34,247.50	34,247.50
<b>Total Supplies</b>			<b>\$222,407.24</b>	<b>\$222,407.24</b>
<b>700 Property</b>				
752 Capital Equipment – Original and Additional			63,024.42	63,024.42
<b>Total Property</b>			<b>\$63,024.42</b>	<b>\$63,024.42</b>
<b>Total 1190 Federally-Funded Regular Programs</b>			<b>\$819,312.67</b>	<b>\$819,312.67</b>



LEA : 125235103 Interboro SD

Printed 11/8/2018 2:02:58 PM

Page - 6 of 25

## General Fund (10)

1200 Special Programs – Elementary / Secondary	Elementary	Secondary	Federal	Total
<b>100 Personnel Services – Salaries</b>				
100 Personnel Services – Salaries	2,458,621.50	2,485,060.39		4,943,681.89
<b>Total Personnel Services – Salaries</b>	<b>\$2,458,621.50</b>	<b>\$2,485,060.39</b>		<b>\$4,943,681.89</b>
<b>200 Personnel Services – Employee Benefits</b>				
210 Group Insurance – Contracted Provider	278,689.49	391,263.15		669,952.64
220 Social Security Contributions	186,368.25	187,963.21		374,331.46
230 PSERS Retirement Contributions	767,327.75	798,404.65		1,565,732.40
250 Unemployment Compensation	2,659.22	2,578.13		5,237.35
260 Workers' Compensation	28,593.69	25,505.87		54,099.56
270 Group Insurance – Self-Insurance	85,959.05	115,785.86		201,744.91
291 Other Retirement Plans	11,725.00	2,350.00		14,075.00
<b>Total Personnel Services – Employee Benefits</b>	<b>\$1,361,322.45</b>	<b>\$1,523,850.87</b>		<b>\$2,885,173.32</b>
<b>300 Purchased Professional and Technical Services</b>				
322 Professional Educational Services – Ius	74,920.58	78,955.30	499,927.48	653,803.36
324 Professional Educational Services – Employee Training and Development Services	6,547.50	4,752.50		11,300.00
329 Professional Educational Services – Other		22,500.98		22,500.98
330 Other Professional Services	47,005.50	4,879.87		51,885.37
<b>Total Purchased Professional and Technical Services</b>	<b>\$128,473.58</b>	<b>\$111,088.65</b>	<b>\$499,927.48</b>	<b>\$739,489.71</b>
<b>400 Purchased Property Services</b>				
440 Rentals	86,110.50	86,110.50		172,221.00
<b>Total Purchased Property Services</b>	<b>\$86,110.50</b>	<b>\$86,110.50</b>		<b>\$172,221.00</b>
<b>500 Other Purchased Services</b>				
561 Tuition To Other School Districts Within the State	11,396.36	115,910.08		127,306.44
562 Tuition To Pennsylvania Charter Schools	51,910.31	109,646.48		161,556.79
563 Tuition To Nonpublic Schools	245,578.53	22,425.00		268,003.53
567 Tuition To Approved Private Schools (APS) and PA Chartered Schools for the Deaf and Blind	338,086.29	208,451.64		546,537.93
568 Tuition To Private Residential Rehabilitative Institutions (PRRI) [In-State] and Detention Centers	14,521.51	225,610.72		240,132.23
569 Tuition – Other	234.08			234.08
580 Travel		32.00		32.00
<b>Total Other Purchased Services</b>	<b>\$661,727.08</b>	<b>\$682,075.92</b>		<b>\$1,343,803.00</b>
<b>600 Supplies</b>				
610 General Supplies	4,184.28	6,021.01	7,881.37	18,086.66
640 Books and Periodicals	1,449.96	801.94		2,251.90
650 Supplies & Fees – Technology Related	259.00	39.99		298.99
<b>Total Supplies</b>	<b>\$5,893.24</b>	<b>\$6,862.94</b>	<b>\$7,881.37</b>	<b>\$20,637.55</b>
<b>800 Other Objects</b>				
820 Claims and Judgments Against the LEA	4,432.50			4,432.50
890 Miscellaneous Expenditures	403.96	1,871.08		2,275.04
<b>Total Other Objects</b>	<b>\$4,836.46</b>	<b>\$1,871.08</b>		<b>\$6,707.54</b>
<b>Total 1200 Special Programs – Elementary / Secondary</b>	<b>\$4,706,984.81</b>	<b>\$4,896,920.35</b>	<b>\$507,808.85</b>	<b>\$10,111,714.01</b>

LEA : 125235103 Interboro SD

Printed 11/8/2018 2:02:58 PM

Page - 7 of 25

## General Fund (10)

## 1210 Life Skills Support

	<u>Elementary</u>	<u>Secondary</u>	<u>Federal</u>	<u>Total</u>
<b>100 Personnel Services – Salaries</b>				
100 Personnel Services – Salaries	197,792.86	186,564.67		384,357.53
<b>Total Personnel Services – Salaries</b>	<b>\$197,792.86</b>	<b>\$186,564.67</b>		<b>\$384,357.53</b>
<b>200 Personnel Services – Employee Benefits</b>				
210 Group Insurance – Contracted Provider	41,988.05	33,419.93		75,407.98
220 Social Security Contributions	14,946.79	14,141.64		29,088.43
230 PSERS Retirement Contributions	62,958.25	59,943.14		122,901.39
250 Unemployment Compensation	205.99	191.81		397.80
260 Workers' Compensation	2,071.13	1,855.58		3,926.71
270 Group Insurance – Self-Insurance	11,977.03	10,244.17		22,221.20
<b>Total Personnel Services – Employee Benefits</b>	<b>\$134,147.24</b>	<b>\$119,796.27</b>		<b>\$253,943.51</b>
<b>300 Purchased Professional and Technical Services</b>				
322 Professional Educational Services – Ius	10,941.56		36,668.25	47,609.81
330 Other Professional Services	4,300.00			4,300.00
<b>Total Purchased Professional and Technical Services</b>	<b>\$15,241.56</b>		<b>\$36,668.25</b>	<b>\$51,909.81</b>
<b>500 Other Purchased Services</b>				
567 Tuition To Approved Private Schools (APS) and PA Chartered Schools for the Deaf and Blind	8,760.90	8,249.60		17,010.50
<b>Total Other Purchased Services</b>	<b>\$8,760.90</b>	<b>\$8,249.60</b>		<b>\$17,010.50</b>
<b>600 Supplies</b>				
610 General Supplies	337.50			337.50
640 Books and Periodicals	637.50			637.50
<b>Total Supplies</b>	<b>\$975.00</b>			<b>\$975.00</b>
<b>Total 1210 Life Skills Support</b>	<b>\$356,917.56</b>	<b>\$314,610.54</b>	<b>\$36,668.25</b>	<b>\$708,196.35</b>



LEA : 125235103 Interboro SD

Printed 11/8/2018 2:02:58 PM

Page - 8 of 25

## General Fund (10)

	<u>Elementary</u>	<u>Secondary</u>	<u>Federal</u>	<u>Total</u>
<b>1220 Sensory Support</b>				
<b>100 Personnel Services – Salaries</b>				
100 Personnel Services – Salaries	269,385.31	113,366.71		382,752.02
<b>Total Personnel Services – Salaries</b>	<b>\$269,385.31</b>	<b>\$113,366.71</b>		<b>\$382,752.02</b>
<b>200 Personnel Services – Employee Benefits</b>				
210 Group Insurance – Contracted Provider	52,327.73	22,965.92		75,293.65
220 Social Security Contributions	20,237.86	8,509.42		28,747.28
230 PSERS Retirement Contributions	86,275.35	36,435.91		122,711.26
250 Unemployment Compensation	284.45	119.90		404.35
260 Workers' Compensation	2,928.94	1,243.59		4,172.53
270 Group Insurance – Self-Insurance	15,032.53	6,617.52		21,650.05
291 Other Retirement Plans	2,350.00	2,350.00		4,700.00
<b>Total Personnel Services – Employee Benefits</b>	<b>\$179,436.86</b>	<b>\$78,242.26</b>		<b>\$257,679.12</b>
<b>300 Purchased Professional and Technical Services</b>				
322 Professional Educational Services – Ius	17,858.83	15,820.07	112,867.50	146,546.40
<b>Total Purchased Professional and Technical Services</b>	<b>\$17,858.83</b>	<b>\$15,820.07</b>	<b>\$112,867.50</b>	<b>\$146,546.40</b>
<b>500 Other Purchased Services</b>				
561 Tuition To Other School Districts Within the State	11,396.36	11,253.78		22,650.14
567 Tuition To Approved Private Schools (APS) and PA Chartered Schools for the Deaf and Blind		5,600.00		5,600.00
<b>Total Other Purchased Services</b>	<b>\$11,396.36</b>	<b>\$16,853.78</b>		<b>\$28,250.14</b>
<b>600 Supplies</b>				
640 Books and Periodicals	120.57	110.05		230.62
<b>Total Supplies</b>	<b>\$120.57</b>	<b>\$110.05</b>		<b>\$230.62</b>
<b>Total 1220 Sensory Support</b>	<b>\$478,197.93</b>	<b>\$224,392.87</b>	<b>\$112,867.50</b>	<b>\$815,458.30</b>

LEA : 125235103 Interboro SD

Printed 11/8/2018 2:02:58 PM

Page - 9 of 25

## General Fund (10)

## 1230 Emotional Support

	<u>Elementary</u>	<u>Secondary</u>	<u>Federal</u>	<u>Total</u>
<b>100 Personnel Services – Salaries</b>				
100 Personnel Services – Salaries	225,316.60	62,805.37		288,121.97
<b>Total Personnel Services – Salaries</b>	<b>\$225,316.60</b>	<b>\$62,805.37</b>		<b>\$288,121.97</b>
<b>200 Personnel Services – Employee Benefits</b>				
210 Group Insurance – Contracted Provider	36,783.30	8,497.01		45,280.31
220 Social Security Contributions	17,017.30	4,791.86		21,809.16
230 PSERS Retirement Contributions	70,418.70	20,455.76		90,874.46
250 Unemployment Compensation	237.70	66.20		303.90
260 Workers' Compensation	2,459.93	684.66		3,144.59
270 Group Insurance – Self-Insurance	11,723.17	2,873.99		14,597.16
<b>Total Personnel Services – Employee Benefits</b>	<b>\$138,640.10</b>	<b>\$37,369.48</b>		<b>\$176,009.58</b>
<b>300 Purchased Professional and Technical Services</b>				
322 Professional Educational Services – Ius	41,260.19	41,513.20	278,453.98	361,227.37
324 Professional Educational Services – Employee Training and Development Services	6,457.50	4,662.50		11,120.00
330 Other Professional Services	42,705.50	4,879.87		47,585.37
<b>Total Purchased Professional and Technical Services</b>	<b>\$90,423.19</b>	<b>\$51,055.57</b>	<b>\$278,453.98</b>	<b>\$419,932.74</b>
<b>500 Other Purchased Services</b>				
561 Tuition To Other School Districts Within the State		102,456.30		102,456.30
563 Tuition To Nonpublic Schools	205,748.53	22,425.00		228,173.53
567 Tuition To Approved Private Schools (APS) and PA Chartered Schools for the Deaf and Blind	70,203.91	86,868.39		157,072.30
568 Tuition To Private Residential Rehabilitative Institutions (PRRI) [In-State] and Detention Centers	14,006.51	176,003.10		190,009.61
<b>Total Other Purchased Services</b>	<b>\$289,958.95</b>	<b>\$387,752.79</b>		<b>\$677,711.74</b>
<b>600 Supplies</b>				
610 General Supplies	1,717.63	59.93		1,777.56
<b>Total Supplies</b>	<b>\$1,717.63</b>	<b>\$59.93</b>		<b>\$1,777.56</b>
<b>Total 1230 Emotional Support</b>	<b>\$746,056.47</b>	<b>\$539,043.14</b>	<b>\$278,453.98</b>	<b>\$1,563,553.59</b>



LEA : 125235103 Interboro SD

Printed 11/8/2018 2:02:58 PM

Page - 10 of 25

## General Fund (10)

## 1240 Academic Support

	<u>Elementary</u>	<u>Secondary</u>	<u>Federal</u>	<u>Total</u>
<b>100 Personnel Services – Salaries</b>				
100 Personnel Services – Salaries	1,741,073.73	2,122,323.64		3,863,397.37
<b>Total Personnel Services – Salaries</b>	<b>\$1,741,073.73</b>	<b>\$2,122,323.64</b>		<b>\$3,863,397.37</b>
<b>200 Personnel Services – Employee Benefits</b>				
210 Group Insurance – Contracted Provider	147,473.28	326,380.29		473,853.57
220 Social Security Contributions	132,249.79	160,520.29		292,770.08
230 PSERS Retirement Contributions	547,675.45	681,569.84		1,229,245.29
250 Unemployment Compensation	1,905.09	2,200.22		4,105.31
260 Workers' Compensation	20,880.53	21,722.04		42,602.57
270 Group Insurance – Self-Insurance	47,226.32	96,050.18		143,276.50
291 Other Retirement Plans	9,375.00			9,375.00
<b>Total Personnel Services – Employee Benefits</b>	<b>\$906,785.46</b>	<b>\$1,288,442.86</b>		<b>\$2,195,228.32</b>
<b>300 Purchased Professional and Technical Services</b>				
324 Professional Educational Services – Employee Training and Development Services	90.00	90.00		180.00
329 Professional Educational Services – Other		22,500.98		22,500.98
<b>Total Purchased Professional and Technical Services</b>	<b>\$90.00</b>	<b>\$22,590.98</b>		<b>\$22,680.98</b>
<b>500 Other Purchased Services</b>				
561 Tuition To Other School Districts Within the State		2,200.00		2,200.00
562 Tuition To Pennsylvania Charter Schools	51,910.31	109,646.48		161,556.79
563 Tuition To Nonpublic Schools	20,580.00			20,580.00
568 Tuition To Private Residential Rehabilitative Institutions (PRRI) [In-State] and Detention Centers	515.00	460.00		975.00
580 Travel		32.00		32.00
<b>Total Other Purchased Services</b>	<b>\$73,005.31</b>	<b>\$112,338.48</b>		<b>\$185,343.79</b>
<b>600 Supplies</b>				
610 General Supplies	2,129.15	5,961.08	7,881.37	15,971.60
640 Books and Periodicals	691.89	691.89		1,383.78
650 Supplies & Fees – Technology Related	259.00	39.99		298.99
<b>Total Supplies</b>	<b>\$3,080.04</b>	<b>\$6,692.96</b>	<b>\$7,881.37</b>	<b>\$17,654.37</b>
<b>800 Other Objects</b>				
820 Claims and Judgments Against the LEA	4,432.50			4,432.50
890 Miscellaneous Expenditures	403.96	1,871.08		2,275.04
<b>Total Other Objects</b>	<b>\$4,836.46</b>	<b>\$1,871.08</b>		<b>\$6,707.54</b>
<b>Total 1240 Academic Support</b>	<b>\$2,728,871.00</b>	<b>\$3,554,260.00</b>	<b>\$7,881.37</b>	<b>\$6,291,012.37</b>

LEA : 125235103 Interboro SD

Printed 11/8/2018 2:02:58 PM

Page - 11 of 25

## General Fund (10)

## 1241 Learning Support – Public

100 Personnel Services – Salaries

	Elementary	Secondary	Federal	Total
100 Personnel Services – Salaries	1,677,684.73	2,034,528.64		3,712,213.37

<b>Total Personnel Services – Salaries</b>	<b>\$1,677,684.73</b>	<b>\$2,034,528.64</b>		<b>\$3,712,213.37</b>
--	-----------------------	-----------------------	--	-----------------------

200 Personnel Services – Employee Benefits

210 Group Insurance – Contracted Provider	146,969.81	310,721.38		457,691.19
---	------------	------------	--	------------

220 Social Security Contributions	127,594.80	154,040.39		281,635.19
-----------------------------------	------------	------------	--	------------

230 PSERS Retirement Contributions	529,749.77	652,975.03		1,182,724.80
------------------------------------	------------	------------	--	--------------

250 Unemployment Compensation	1,837.98	2,107.44		3,945.42
-------------------------------	----------	----------	--	----------

260 Workers' Compensation	20,185.00	20,764.96		40,949.96
---------------------------	-----------	-----------	--	-----------

270 Group Insurance – Self-Insurance	45,565.81	91,826.49		137,392.30
--------------------------------------	-----------	-----------	--	------------

291 Other Retirement Plans	9,375.00			9,375.00
----------------------------	----------	--	--	----------

<b>Total Personnel Services – Employee Benefits</b>	<b>\$881,278.17</b>	<b>\$1,232,435.69</b>		<b>\$2,113,713.86</b>
---	---------------------	-----------------------	--	-----------------------

300 Purchased Professional and Technical Services

329 Professional Educational Services – Other		22,500.98		22,500.98
---	--	-----------	--	-----------

<b>Total Purchased Professional and Technical Services</b>		<b>\$22,500.98</b>		<b>\$22,500.98</b>
--	--	--------------------	--	--------------------

500 Other Purchased Services

561 Tuition To Other School Districts Within the State		2,200.00		2,200.00
--	--	----------	--	----------

562 Tuition To Pennsylvania Charter Schools	51,910.31	109,646.48		161,556.79
---	-----------	------------	--	------------

563 Tuition To Nonpublic Schools	20,580.00			20,580.00
----------------------------------	-----------	--	--	-----------

568 Tuition To Private Residential Rehabilitative Institutions (PRRI) [In-State] and Detention Centers	515.00	460.00		975.00
--	--------	--------	--	--------

580 Travel		32.00		32.00
------------	--	-------	--	-------

<b>Total Other Purchased Services</b>	<b>\$73,005.31</b>	<b>\$112,338.48</b>		<b>\$185,343.79</b>
---------------------------------------	--------------------	---------------------	--	---------------------

600 Supplies

610 General Supplies	1,380.62	4,592.25	7,881.37	13,854.24
----------------------	----------	----------	----------	-----------

640 Books and Periodicals	691.89	691.89		1,383.78
---------------------------	--------	--------	--	----------

650 Supplies & Fees – Technology Related	259.00	39.99		298.99
--	--------	-------	--	--------

<b>Total Supplies</b>	<b>\$2,331.51</b>	<b>\$5,324.13</b>	<b>\$7,881.37</b>	<b>\$15,537.01</b>
-----------------------	-------------------	-------------------	-------------------	--------------------

800 Other Objects

820 Claims and Judgments Against the LEA	4,432.50			4,432.50
--	----------	--	--	----------

<b>Total Other Objects</b>	<b>\$4,432.50</b>			<b>\$4,432.50</b>
----------------------------	-------------------	--	--	-------------------

<b>Total 1241 Learning Support – Public</b>	<b>\$2,638,732.22</b>	<b>\$3,407,127.92</b>	<b>\$7,881.37</b>	<b>\$6,053,741.51</b>
---	-----------------------	-----------------------	-------------------	-----------------------



LEA : 125235103 Interboro SD

Printed 11/8/2018 2:02:58 PM

Page - 12 of 25

## General Fund (10)

## 1243 Gifted Support

	<u>Elementary</u>	<u>Secondary</u>	<u>Federal</u>	<u>Total</u>
<b>100 Personnel Services – Salaries</b>				
100 Personnel Services – Salaries	63,389.00	87,795.00		151,184.00
<b>Total Personnel Services – Salaries</b>	<b>\$63,389.00</b>	<b>\$87,795.00</b>		<b>\$151,184.00</b>
<b>200 Personnel Services – Employee Benefits</b>				
210 Group Insurance – Contracted Provider	503.47	15,658.91		16,162.38
220 Social Security Contributions	4,654.99	6,479.90		11,134.89
230 PSERS Retirement Contributions	17,925.68	28,594.81		46,520.49
250 Unemployment Compensation	67.11	92.78		159.89
260 Workers' Compensation	695.53	957.08		1,652.61
270 Group Insurance – Self-Insurance	1,660.51	4,223.69		5,884.20
<b>Total Personnel Services – Employee Benefits</b>	<b>\$25,507.29</b>	<b>\$56,007.17</b>		<b>\$81,514.46</b>
<b>300 Purchased Professional and Technical Services</b>				
324 Professional Educational Services – Employee Training and Development Services	90.00	90.00		180.00
<b>Total Purchased Professional and Technical Services</b>	<b>\$90.00</b>	<b>\$90.00</b>		<b>\$180.00</b>
<b>600 Supplies</b>				
610 General Supplies	748.53	1,368.83		2,117.36
<b>Total Supplies</b>	<b>\$748.53</b>	<b>\$1,368.83</b>		<b>\$2,117.36</b>
<b>800 Other Objects</b>				
890 Miscellaneous Expenditures	403.96	1,871.08		2,275.04
<b>Total Other Objects</b>	<b>\$403.96</b>	<b>\$1,871.08</b>		<b>\$2,275.04</b>
<b>Total 1243 Gifted Support</b>	<b>\$90,138.78</b>	<b>\$147,132.08</b>		<b>\$237,270.86</b>

LEA : 125235103 Interboro SD

Printed 11/8/2018 2:02:58 PM

Page - 13 of 25

## General Fund (10)

## 1260 Physical Support

	<u>Elementary</u>	<u>Secondary</u>	<u>Federal</u>	<u>Total</u>
<b>100 Personnel Services – Salaries</b>				
100 Personnel Services – Salaries	25,053.00			25,053.00
<b>Total Personnel Services – Salaries</b>	<b>\$25,053.00</b>			<b>\$25,053.00</b>
<b>200 Personnel Services – Employee Benefits</b>				
210 Group Insurance – Contracted Provider	117.13			117.13
220 Social Security Contributions	1,916.51			1,916.51
250 Unemployment Compensation	25.99			25.99
260 Workers' Compensation	253.16			253.16
<b>Total Personnel Services – Employee Benefits</b>	<b>\$2,312.79</b>			<b>\$2,312.79</b>
<b>Total 1260 Physical Support</b>	<b>\$27,365.79</b>			<b>\$27,365.79</b>

LEA : 125235103 Interboro SD

Printed 11/8/2018 2:02:58 PM

Page - 14 of 25

## General Fund (10)

## 1270 Multi-Handicapped Support

	<u>Elementary</u>	<u>Secondary</u>	<u>Federal</u>	<u>Total</u>
<b>300 <u>Purchased Professional and Technical Services</u></b>				
322 Professional Educational Services – Ius	4,860.00	16,152.04	53,606.25	74,618.29
<b>Total Purchased Professional and Technical Services</b>	<b>\$4,860.00</b>	<b>\$16,152.04</b>	<b>\$53,606.25</b>	<b>\$74,618.29</b>
<b>500 <u>Other Purchased Services</u></b>				
563 Tuition To Nonpublic Schools	19,250.00			19,250.00
567 Tuition To Approved Private Schools (APS) and PA Chartered Schools for the Deaf and Blind	97,521.00			97,521.00
568 Tuition To Private Residential Rehabilitative Institutions (PRRI) [In-State] and Detention Centers		31,840.00		31,840.00
<b>Total Other Purchased Services</b>	<b>\$116,771.00</b>	<b>\$31,840.00</b>		<b>\$148,611.00</b>
<b>Total 1270 Multi-Handicapped Support</b>	<b>\$121,631.00</b>	<b>\$47,992.04</b>	<b>\$53,606.25</b>	<b>\$223,229.29</b>

## General Fund (10)

## 1290 Special Programs - Other Support

300 Purchased Professional and Technical Services

322 Professional Educational Services – Ius

**Total Purchased Professional and Technical Services**400 Purchased Property Services

440 Rentals

**Total Purchased Property Services**500 Other Purchased Services

567 Tuition To Approved Private Schools (APS) and PA Chartered Schools for the Deaf and Blind

568 Tuition To Private Residential Rehabilitative Institutions (PRRI) [In-State] and Detention Centers

569 Tuition – Other

**Total Other Purchased Services****Total 1290 Special Programs - Other Support**ElementarySecondaryFederalTotal

5,469.99

18,331.50

23,801.49

**\$5,469.99****\$18,331.50****\$23,801.49**

86,110.50

86,110.50

172,221.00

**\$86,110.50****\$86,110.50****\$172,221.00**

161,600.48

107,733.65

269,334.13

17,307.62

17,307.62

234.08

234.08

**\$161,834.56****\$125,041.27****\$286,875.83****\$247,945.06****\$216,621.76****\$18,331.50****\$482,898.32**



LEA : 125235103 Interboro SD

Printed 11/8/2018 2:02:58 PM

Page - 16 of 25

## General Fund (10)

## 1300 Vocational Education

500 Other Purchased Services

564 Tuition To Career and Technology Centers

**Total Other Purchased Services****Total 1300 Vocational Education**ElementarySecondaryFederalTotal

1,036,796.00

1,036,796.00

**\$1,036,796.00****\$1,036,796.00****\$1,036,796.00****\$1,036,796.00**

LEA : 125235103 Interboro SD

Printed 11/8/2018 2:02:58 PM

Page - 17 of 25

## General Fund (10)

## 1400 Other Instructional Programs – Elementary / Secondary

	<u>Elementary</u>	<u>Secondary</u>	<u>Federal</u>	<u>Total</u>
<b>100 Personnel Services – Salaries</b>				
100 Personnel Services – Salaries	23,784.61	137,907.50		161,692.11
<b>Total Personnel Services – Salaries</b>	<b>\$23,784.61</b>	<b>\$137,907.50</b>		<b>\$161,692.11</b>
<b>200 Personnel Services – Employee Benefits</b>				
220 Social Security Contributions	1,811.78	10,542.53		12,354.31
230 PSERS Retirement Contributions	7,746.65	40,464.64		48,211.29
250 Unemployment Compensation	30.03	153.93		183.96
260 Workers' Compensation	216.41	1,160.05		1,376.46
<b>Total Personnel Services – Employee Benefits</b>	<b>\$9,804.87</b>	<b>\$52,321.15</b>		<b>\$62,126.02</b>
<b>300 Purchased Professional and Technical Services</b>				
322 Professional Educational Services – Ius		27,499.11	63,379.94	90,879.05
323 Professional Educational Services – Other Educational Agencies		400.00		400.00
<b>Total Purchased Professional and Technical Services</b>		<b>\$27,899.11</b>	<b>\$63,379.94</b>	<b>\$91,279.05</b>
<b>500 Other Purchased Services</b>				
561 Tuition To Other School Districts Within the State		26,467.83		26,467.83
568 Tuition To Private Residential Rehabilitative Institutions (PRRI) [In-State] and Detention Centers	1,002.24	13,744.97		14,747.21
597 Direct Payments To Intermediate Units for Institutionalized Childrens' Program		198,543.27		198,543.27
<b>Total Other Purchased Services</b>	<b>\$1,002.24</b>	<b>\$238,756.07</b>		<b>\$239,758.31</b>
<b>Total 1400 Other Instructional Programs – Elementary / Secondary</b>	<b>\$34,591.72</b>	<b>\$456,883.83</b>	<b>\$63,379.94</b>	<b>\$554,855.49</b>

## General Fund (10)

## 1420 Summer School

	<u>Elementary</u>	<u>Secondary</u>	<u>Federal</u>	<u>Total</u>
<b>100 Personnel Services – Salaries</b>				
100 Personnel Services – Salaries	4,419.11	20,190.00		24,609.11
<b>Total Personnel Services – Salaries</b>	<b>\$4,419.11</b>	<b>\$20,190.00</b>		<b>\$24,609.11</b>
<b>200 Personnel Services – Employee Benefits</b>				
220 Social Security Contributions	338.07	1,544.10		1,882.17
230 PSERS Retirement Contributions	1,439.30	6,575.90		8,015.20
250 Unemployment Compensation	4.43	20.19		24.62
260 Workers' Compensation	39.77	181.72		221.49
<b>Total Personnel Services – Employee Benefits</b>	<b>\$1,821.57</b>	<b>\$8,321.91</b>		<b>\$10,143.48</b>
<b>Total 1420 Summer School</b>	<b>\$6,240.68</b>	<b>\$28,511.91</b>		<b>\$34,752.59</b>

LEA : 125235103 Interboro SD

Printed 11/8/2018 2:02:58 PM

Page - 19 of 25

## General Fund (10)

1430 Homebound Instruction	<u>Elementary</u>	<u>Secondary</u>	<u>Federal</u>	<u>Total</u>
<b>100 Personnel Services – Salaries</b>				
100 Personnel Services – Salaries	19,365.50	56,684.50		76,050.00
<b>Total Personnel Services – Salaries</b>	<b>\$19,365.50</b>	<b>\$56,684.50</b>		<b>\$76,050.00</b>
<b>200 Personnel Services – Employee Benefits</b>				
220 Social Security Contributions	1,473.71	4,332.43		5,806.14
230 PSERS Retirement Contributions	6,307.35	14,009.80		20,317.15
250 Unemployment Compensation	25.60	72.66		98.26
260 Workers' Compensation	176.64	434.00		610.64
<b>Total Personnel Services – Employee Benefits</b>	<b>\$7,983.30</b>	<b>\$18,848.89</b>		<b>\$26,832.19</b>
<b>Total 1430 Homebound Instruction</b>	<b>\$27,348.80</b>	<b>\$75,533.39</b>		<b>\$102,882.19</b>



## General Fund (10)

1440 Alternative Regular Education Programs	<u>Elementary</u>	<u>Secondary</u>	<u>Federal</u>	<u>Total</u>
<b>100 <u>Personnel Services – Salaries</u></b>				
100 Personnel Services – Salaries		61,033.00		61,033.00
<b>Total Personnel Services – Salaries</b>		<b>\$61,033.00</b>		<b>\$61,033.00</b>
<b>200 <u>Personnel Services – Employee Benefits</u></b>				
220 Social Security Contributions		4,666.00		4,666.00
230 PSERS Retirement Contributions		19,878.94		19,878.94
250 Unemployment Compensation		61.08		61.08
260 Workers' Compensation		544.33		544.33
<b>Total Personnel Services – Employee Benefits</b>		<b>\$25,150.35</b>		<b>\$25,150.35</b>
<b>300 <u>Purchased Professional and Technical Services</u></b>				
322 Professional Educational Services – Ius		27,499.11	63,379.94	90,879.05
323 Professional Educational Services – Other Educational Agencies		400.00		400.00
<b>Total Purchased Professional and Technical Services</b>		<b>\$27,899.11</b>	<b>\$63,379.94</b>	<b>\$91,279.05</b>
<b>500 <u>Other Purchased Services</u></b>				
561 Tuition To Other School Districts Within the State		26,467.83		26,467.83
568 Tuition To Private Residential Rehabilitative Institutions (PRRI) [In-State] and Detention Centers	1,002.24	13,744.97		14,747.21
597 Direct Payments To Intermediate Units for Institutionalized Childrens' Program		198,543.27		198,543.27
<b>Total Other Purchased Services</b>	<b>\$1,002.24</b>	<b>\$238,756.07</b>		<b>\$239,758.31</b>
<b>Total 1440 Alternative Regular Education Programs</b>	<b>\$1,002.24</b>	<b>\$352,838.53</b>	<b>\$63,379.94</b>	<b>\$417,220.71</b>

General Fund (10)

1441 Adjudicated / Court-Placed Programs

500 Other Purchased Services

	<u>Elementary</u>	<u>Secondary</u>	<u>Federal</u>	<u>Total</u>
561 Tuition To Other School Districts Within the State		26,467.83		26,467.83
597 Direct Payments To Intermediate Units for Institutionalized Childrens' Program		198,543.27		198,543.27
Total Other Purchased Services		\$225,011.10		\$225,011.10
Total 1441 Adjudicated / Court-Placed Programs		\$225,011.10		\$225,011.10



## General Fund (10)

1442 Alternative Education Programs	<u>Elementary</u>	<u>Secondary</u>	<u>Federal</u>	<u>Total</u>
100 <u>Personnel Services – Salaries</u>				
100 Personnel Services – Salaries		61,033.00		61,033.00
<b>Total Personnel Services – Salaries</b>		<b>\$61,033.00</b>		<b>\$61,033.00</b>
200 <u>Personnel Services – Employee Benefits</u>				
220 Social Security Contributions		4,666.00		4,666.00
230 PSERS Retirement Contributions		19,878.94		19,878.94
250 Unemployment Compensation		61.08		61.08
260 Workers' Compensation		544.33		544.33
<b>Total Personnel Services – Employee Benefits</b>		<b>\$25,150.35</b>		<b>\$25,150.35</b>
300 <u>Purchased Professional and Technical Services</u>				
322 Professional Educational Services – Ius		27,499.11	63,379.94	90,879.05
323 Professional Educational Services – Other Educational Agencies		400.00		400.00
<b>Total Purchased Professional and Technical Services</b>		<b>\$27,899.11</b>	<b>\$63,379.94</b>	<b>\$91,279.05</b>
500 <u>Other Purchased Services</u>				
568 Tuition To Private Residential Rehabilitative Institutions (PRRI) [In-State] and Detention Centers	1,002.24	13,744.97		14,747.21
<b>Total Other Purchased Services</b>	<b>\$1,002.24</b>	<b>\$13,744.97</b>		<b>\$14,747.21</b>
<b>Total 1442 Alternative Education Programs</b>	<b>\$1,002.24</b>	<b>\$127,827.43</b>	<b>\$63,379.94</b>	<b>\$192,209.61</b>

General Fund (10)

1600 Adult Education Programs	<u>Elementary</u>	<u>Secondary</u>	<u>Federal</u>	<u>Total</u>
500 <u>Other Purchased Services</u>				
566 Tuition To Institutions of Higher Education and Technical Institutes				359,560.00
Total Other Purchased Services				\$359,560.00
800 <u>Other Objects</u>				
890 Miscellaneous Expenditures				92,546.00
Total Other Objects				\$92,546.00
Total 1600 Adult Education Programs				\$452,106.00

## General Fund (10)

## 1800 Pre-Kindergarten

ElementarySecondaryFederalTotal100 Personnel Services – Salaries

100 Personnel Services – Salaries

35,508.63

**Total Personnel Services – Salaries****\$35,508.63**200 Personnel Services – Employee Benefits

210 Group Insurance – Contracted Provider

3,156.64

220 Social Security Contributions

1,545.73

230 PSERS Retirement Contributions

6,803.18

250 Unemployment Compensation

20.85

260 Workers' Compensation

187.50

270 Group Insurance – Self-Insurance

984.87

**Total Personnel Services – Employee Benefits****\$12,698.77**300 Purchased Professional and Technical Services

330 Other Professional Services

285.00

**Total Purchased Professional and Technical Services****\$285.00**400 Purchased Property Services

430 Repairs and Maintenance Services

4,629.41

**Total Purchased Property Services****\$4,629.41**600 Supplies

610 General Supplies

24,774.36

630 Food

747.74

**Total Supplies****\$25,522.10**800 Other Objects

890 Miscellaneous Expenditures

54.48

**Total Other Objects****\$54.48****Total 1800 Pre-Kindergarten****\$78,698.39**



LEA : 125235103 Interboro SD

Printed 11/8/2018 2:02:58 PM

Page - 25 of 25

## General Fund (10)

## 1801 Pre-K Instruction

ElementarySecondaryFederalTotal100 Personnel Services – Salaries

100 Personnel Services – Salaries

35,508.63

**Total Personnel Services – Salaries****\$35,508.63**200 Personnel Services – Employee Benefits

210 Group Insurance – Contracted Provider

3,156.64

220 Social Security Contributions

1,545.73

230 PSERS Retirement Contributions

6,803.18

250 Unemployment Compensation

20.85

260 Workers' Compensation

187.50

270 Group Insurance – Self-Insurance

984.87

**Total Personnel Services – Employee Benefits****\$12,698.77**300 Purchased Professional and Technical Services

330 Other Professional Services

285.00

**Total Purchased Professional and Technical Services****\$285.00**400 Purchased Property Services

430 Repairs and Maintenance Services

4,629.41

**Total Purchased Property Services****\$4,629.41**600 Supplies

610 General Supplies

24,774.36

630 Food

747.74

**Total Supplies****\$25,522.10**800 Other Objects

890 Miscellaneous Expenditures

54.48

**Total Other Objects****\$54.48****Total 1801 Pre-K Instruction****\$78,698.39**

LEA : 125235103 Interboro SD

Printed 11/8/2018 2:03:00 PM

Page - 1 of 57

**General Fund (10)****2000 Support Services****Total****100 Personnel Services – Salaries**

100 Personnel Services – Salaries	9,538,590.18
-----------------------------------	--------------

**Total Personnel Services – Salaries****\$9,538,590.18****200 Personnel Services – Employee Benefits**

210 Group Insurance – Contracted Provider	993,043.42
220 Social Security Contributions	719,665.02
230 PSERS Retirement Contributions	2,935,604.21
240 Tuition Reimbursement	122,282.46
250 Unemployment Compensation	10,225.64
260 Workers' Compensation	104,779.76
270 Group Insurance – Self-Insurance	315,802.30
291 Other Retirement Plans	108,343.15
299 All Other Employee Benefits	597,302.49

**Total Personnel Services – Employee Benefits****\$5,907,048.45****300 Purchased Professional and Technical Services**

310 Official / Administrative Services	1,600.00
322 Professional Educational Services – Ius	43,475.08
324 Professional Educational Services – Employee Training and Development Services	36,206.07
329 Professional Educational Services – Other	44,107.41
330 Other Professional Services	497,089.68

**Total Purchased Professional and Technical Services****\$622,478.24****400 Purchased Property Services**

410 Cleaning Services	59,842.96
420 Utility Services	89,409.05
430 Repairs and Maintenance Services	265,401.83
440 Rentals	395,066.82
460 Extermination Services	5,952.00

**Total Purchased Property Services****\$815,672.66****500 Other Purchased Services**

513 Contracted Carriers	377,850.00
516 Student Transportation Services From the IU	92,015.62
520 Insurance – General	55,827.00
521 Fire Insurance	74,455.00
522 Automotive Liability Insurance	38,035.00
523 General Property and Liability Insurance	47,667.00
530 Communications	39,574.81
549 Other Advertising/Public Relations	2,703.38
580 Travel	8,811.20
595 IU Payments By Withholding	37,655.41

**Total Other Purchased Services****\$774,594.42****600 Supplies**

610 General Supplies	373,837.91
620 Energy	623,311.93
630 Food	8,357.73



LEA : 125235103 Interboro SD

Printed 11/8/2018 2:03:00 PM

Page - 2 of 57

## General Fund (10)

## 2000 Support Services

Total

600 <u>Supplies</u>	
640 Books and Periodicals	5,397.66
650 Supplies & Fees – Technology Related	296,587.83
<b>Total Supplies</b>	<b>\$1,307,493.06</b>
700 <u>Property</u>	
752 Capital Equipment – Original and Additional	59,366.00
766 Capitalized Technology Hardware and Equipment – Replacement	274,450.06
<b>Total Property</b>	<b>\$333,816.06</b>
800 <u>Other Objects</u>	
810 Dues and Fees	57,678.79
890 Miscellaneous Expenditures	7,081.37
<b>Total Other Objects</b>	<b>\$64,760.16</b>
<b>Total 2000 Support Services</b>	<b>\$19,364,453.23</b>

LEA : 125235103 Interboro SD

Printed 11/8/2018 2:03:00 PM

Page - 3 of 57

## General Fund (10)

2100 Support Services – Students	Elementary	Secondary	Federal	Total
<b>100 Personnel Services – Salaries</b>				
100 Personnel Services – Salaries	756,380.82	823,512.74		1,871,573.54
<b>Total Personnel Services – Salaries</b>	<b>\$756,380.82</b>	<b>\$823,512.74</b>		<b>\$1,871,573.54</b>
<b>200 Personnel Services – Employee Benefits</b>				
210 Group Insurance – Contracted Provider	84,356.35	67,267.61		216,056.53
220 Social Security Contributions	57,195.35	61,684.09		140,619.51
230 PSERS Retirement Contributions	233,463.99	255,612.22		576,596.34
250 Unemployment Compensation	802.67	872.24		1,985.37
260 Workers' Compensation	8,414.32	9,116.27		20,770.48
270 Group Insurance – Self-Insurance	26,045.50	21,596.12		66,772.93
291 Other Retirement Plans	16,508.56	16,508.54		35,823.14
<b>Total Personnel Services – Employee Benefits</b>	<b>\$426,786.74</b>	<b>\$432,657.09</b>		<b>\$1,058,624.30</b>
<b>300 Purchased Professional and Technical Services</b>				
324 Professional Educational Services – Employee Training and Development Services	6,224.00			6,224.00
329 Professional Educational Services – Other			4,000.00	4,000.00
330 Other Professional Services	183,142.88		44,248.83	227,391.71
<b>Total Purchased Professional and Technical Services</b>	<b>\$189,366.88</b>		<b>\$48,248.83</b>	<b>\$237,615.71</b>
<b>500 Other Purchased Services</b>				
530 Communications	3,701.18			3,701.18
580 Travel	3,349.91	82.62		3,432.53
<b>Total Other Purchased Services</b>	<b>\$7,051.09</b>	<b>\$82.62</b>		<b>\$7,133.71</b>
<b>600 Supplies</b>				
610 General Supplies	13,190.80	14,240.16		27,430.96
630 Food	81.00			81.00
650 Supplies & Fees – Technology Related	3,443.50			3,443.50
<b>Total Supplies</b>	<b>\$16,715.30</b>	<b>\$14,240.16</b>		<b>\$30,955.46</b>
<b>800 Other Objects</b>				
810 Dues and Fees	735.00	630.00		1,365.00
<b>Total Other Objects</b>	<b>\$735.00</b>	<b>\$630.00</b>		<b>\$1,365.00</b>
<b>Total 2100 Support Services – Students</b>	<b>\$1,397,035.83</b>	<b>\$1,271,122.61</b>	<b>\$48,248.83</b>	<b>\$3,207,267.72</b>

LEA : 125235103 Interboro SD

Printed 11/8/2018 2:03:00 PM

Page - 4 of 57

## General Fund (10)

	<u>Elementary</u>	<u>Secondary</u>	<u>Federal</u>	<u>Total</u>
<b>2110 Supervision of Student Services</b>				
<b>100 Personnel Services – Salaries</b>				
100 Personnel Services – Salaries	158,238.14	154,374.70		312,612.84
<b>Total Personnel Services – Salaries</b>	<b>\$158,238.14</b>	<b>\$154,374.70</b>		<b>\$312,612.84</b>
<b>200 Personnel Services – Employee Benefits</b>				
210 Group Insurance – Contracted Provider	13,867.10	12,385.57		26,252.67
220 Social Security Contributions	11,777.35	11,488.15		23,265.50
230 PSERS Retirement Contributions	47,134.01	46,358.32		93,492.33
250 Unemployment Compensation	169.26	164.05		333.31
260 Workers' Compensation	1,823.18	1,734.08		3,557.26
270 Group Insurance – Self-Insurance	3,828.82	3,417.54		7,246.36
291 Other Retirement Plans	16,508.56	16,508.54		33,017.10
<b>Total Personnel Services – Employee Benefits</b>	<b>\$95,108.28</b>	<b>\$92,056.25</b>		<b>\$187,164.53</b>
<b>300 Purchased Professional and Technical Services</b>				
324 Professional Educational Services – Employee Training and Development Services	6,224.00			6,224.00
330 Other Professional Services	183,142.88			183,142.88
<b>Total Purchased Professional and Technical Services</b>	<b>\$189,366.88</b>			<b>\$189,366.88</b>
<b>500 Other Purchased Services</b>				
530 Communications	3,701.18			3,701.18
580 Travel	3,349.91			3,349.91
<b>Total Other Purchased Services</b>	<b>\$7,051.09</b>			<b>\$7,051.09</b>
<b>600 Supplies</b>				
610 General Supplies	1,496.94	1,648.73		3,145.67
630 Food	81.00			81.00
650 Supplies & Fees – Technology Related	3,443.50			3,443.50
<b>Total Supplies</b>	<b>\$5,021.44</b>	<b>\$1,648.73</b>		<b>\$6,670.17</b>
<b>800 Other Objects</b>				
810 Dues and Fees	735.00	630.00		1,365.00
<b>Total Other Objects</b>	<b>\$735.00</b>	<b>\$630.00</b>		<b>\$1,365.00</b>
<b>Total 2110 Supervision of Student Services</b>	<b>\$455,520.83</b>	<b>\$248,709.68</b>		<b>\$704,230.51</b>



## General Fund (10)

## 2111 Supervision of Student Services – Head of Component

	<u>Elementary</u>	<u>Secondary</u>	<u>Federal</u>	<u>Total</u>
<b>100 Personnel Services – Salaries</b>				
100 Personnel Services – Salaries	158,238.14	154,374.70		312,612.84
<b>Total Personnel Services – Salaries</b>	<b>\$158,238.14</b>	<b>\$154,374.70</b>		<b>\$312,612.84</b>
<b>200 Personnel Services – Employee Benefits</b>				
210 Group Insurance – Contracted Provider	13,867.10	12,385.57		26,252.67
220 Social Security Contributions	11,777.35	11,488.15		23,265.50
230 PSERS Retirement Contributions	47,134.01	46,358.32		93,492.33
250 Unemployment Compensation	169.26	164.05		333.31
260 Workers' Compensation	1,823.18	1,734.08		3,557.26
270 Group Insurance – Self-Insurance	3,828.82	3,417.54		7,246.36
291 Other Retirement Plans	16,508.56	16,508.54		33,017.10
<b>Total Personnel Services – Employee Benefits</b>	<b>\$95,108.28</b>	<b>\$92,056.25</b>		<b>\$187,164.53</b>
<b>300 Purchased Professional and Technical Services</b>				
324 Professional Educational Services – Employee Training and Development Services	6,224.00			6,224.00
330 Other Professional Services	183,142.88			183,142.88
<b>Total Purchased Professional and Technical Services</b>	<b>\$189,366.88</b>			<b>\$189,366.88</b>
<b>500 Other Purchased Services</b>				
530 Communications	3,701.18			3,701.18
580 Travel	3,349.91			3,349.91
<b>Total Other Purchased Services</b>	<b>\$7,051.09</b>			<b>\$7,051.09</b>
<b>600 Supplies</b>				
610 General Supplies	1,496.94	1,648.73		3,145.67
630 Food	81.00			81.00
650 Supplies & Fees – Technology Related	3,443.50			3,443.50
<b>Total Supplies</b>	<b>\$5,021.44</b>	<b>\$1,648.73</b>		<b>\$6,670.17</b>
<b>800 Other Objects</b>				
810 Dues and Fees	735.00	630.00		1,365.00
<b>Total Other Objects</b>	<b>\$735.00</b>	<b>\$630.00</b>		<b>\$1,365.00</b>
<b>Total 2111 Supervision of Student Services – Head of Component</b>	<b>\$455,520.83</b>	<b>\$248,709.68</b>		<b>\$704,230.51</b>



LEA : 125235103 Interboro SD

Printed 11/8/2018 2:03:00 PM

Page - 6 of 57

## General Fund (10)

## 2120 Guidance Services

## 100 Personnel Services – Salaries

	Elementary	Secondary	Federal	Total
100 Personnel Services – Salaries	306,114.17	499,375.05		805,489.22
<b>Total Personnel Services – Salaries</b>	<b>\$306,114.17</b>	<b>\$499,375.05</b>		<b>\$805,489.22</b>

## 200 Personnel Services – Employee Benefits

210 Group Insurance – Contracted Provider	19,323.07	29,768.22		49,091.29
220 Social Security Contributions	23,429.26	37,502.47		60,931.73
230 PSERS Retirement Contributions	93,411.11	154,693.66		248,104.77
250 Unemployment Compensation	325.33	528.87		854.20
260 Workers' Compensation	3,422.73	5,528.09		8,950.82
270 Group Insurance – Self-Insurance	6,887.91	10,456.48		17,344.39
<b>Total Personnel Services – Employee Benefits</b>	<b>\$146,799.41</b>	<b>\$238,477.79</b>		<b>\$385,277.20</b>

## 600 Supplies

610 General Supplies	28.46	927.01		955.47
<b>Total Supplies</b>	<b>\$28.46</b>	<b>\$927.01</b>		<b>\$955.47</b>
<b>Total 2120 Guidance Services</b>	<b>\$452,942.04</b>	<b>\$738,779.85</b>		<b>\$1,191,721.89</b>

LEA : 125235103 Interboro SD

Printed 11/8/2018 2:03:00 PM

Page - 7 of 57

## General Fund (10)

2140 Psychological Services	Elementary	Secondary	Federal	Total
100 <u>Personnel Services – Salaries</u>				
100 Personnel Services – Salaries	292,028.51	169,762.99		461,791.50
<b>Total Personnel Services – Salaries</b>	<b>\$292,028.51</b>	<b>\$169,762.99</b>		<b>\$461,791.50</b>
200 <u>Personnel Services – Employee Benefits</u>				
210 Group Insurance – Contracted Provider	51,166.18	25,113.82		76,280.00
220 Social Security Contributions	21,988.74	12,693.47		34,682.21
230 PSERS Retirement Contributions	92,918.87	54,560.24		147,479.11
250 Unemployment Compensation	308.08	179.32		487.40
260 Workers' Compensation	3,168.41	1,854.10		5,022.51
270 Group Insurance – Self-Insurance	15,328.77	7,722.10		23,050.87
<b>Total Personnel Services – Employee Benefits</b>	<b>\$184,879.05</b>	<b>\$102,123.05</b>		<b>\$287,002.10</b>
500 <u>Other Purchased Services</u>				
580 Travel		82.62		82.62
<b>Total Other Purchased Services</b>		<b>\$82.62</b>		<b>\$82.62</b>
600 <u>Supplies</u>				
610 General Supplies	11,665.40	11,664.42		23,329.82
<b>Total Supplies</b>	<b>\$11,665.40</b>	<b>\$11,664.42</b>		<b>\$23,329.82</b>
<b>Total 2140 Psychological Services</b>	<b>\$488,572.96</b>	<b>\$283,633.08</b>		<b>\$772,206.04</b>

LEA : 125235103 Interboro SD

Printed 11/8/2018 2:03:00 PM

Page - 8 of 57

## General Fund (10)

## 2160 Social Work Services

ElementarySecondaryFederalTotal100 Personnel Services – Salaries

100 Personnel Services – Salaries

208,193.00

**Total Personnel Services – Salaries****\$208,193.00**200 Personnel Services – Employee Benefits

210 Group Insurance – Contracted Provider

41,723.04

220 Social Security Contributions

15,441.23

230 PSERS Retirement Contributions

64,882.18

250 Unemployment Compensation

220.00

260 Workers' Compensation

2,268.90

270 Group Insurance – Self-Insurance

12,586.54

**Total Personnel Services – Employee Benefits****\$137,121.89****Total 2160 Social Work Services****\$345,314.89**

## General Fund (10)

2170 Student Accounting Services	<u>Elementary</u>	<u>Secondary</u>	<u>Federal</u>	<u>Total</u>
100 <u>Personnel Services – Salaries</u>				
100 Personnel Services – Salaries				83,486.98
<b>Total Personnel Services – Salaries</b>				<b>\$83,486.98</b>
200 <u>Personnel Services – Employee Benefits</u>				
210 Group Insurance – Contracted Provider				22,709.53
220 Social Security Contributions				6,298.84
230 PSERS Retirement Contributions				22,637.95
250 Unemployment Compensation				90.46
260 Workers' Compensation				970.99
270 Group Insurance – Self-Insurance				6,544.77
291 Other Retirement Plans				2,806.04
<b>Total Personnel Services – Employee Benefits</b>				<b>\$62,058.58</b>
<b>Total 2170 Student Accounting Services</b>				<b>\$145,545.56</b>



General Fund (10)				
2190 Other Student Services	Elementary	Secondary	Federal	Total
300 Purchased Professional and Technical Services				
329 Professional Educational Services – Other			4,000.00	4,000.00
330 Other Professional Services			44,248.83	44,248.83
Total Purchased Professional and Technical Services			\$48,248.83	\$48,248.83
Total 2190 Other Student Services			\$48,248.83	\$48,248.83

LEA : 125235103 Interboro SD

Printed 11/8/2018 2:03:00 PM

Page - 11 of 57

## General Fund (10)

	<u>Elementary</u>	<u>Secondary</u>	<u>Federal</u>	<u>Total</u>
<b>2200 Support Services – Instructional Staff</b>				
<b>100 Personnel Services – Salaries</b>				
100 Personnel Services – Salaries	315,717.57	215,339.72	19,052.69	550,109.98
<b>Total Personnel Services – Salaries</b>	<b>\$315,717.57</b>	<b>\$215,339.72</b>	<b>\$19,052.69</b>	<b>\$550,109.98</b>
<b>200 Personnel Services – Employee Benefits</b>				
210 Group Insurance – Contracted Provider	33,249.63	8,584.84	2,465.29	44,299.76
220 Social Security Contributions	23,539.73	16,294.86	1,521.55	41,356.14
230 PSERS Retirement Contributions	97,934.67	65,923.96	6,049.94	169,908.57
240 Tuition Reimbursement	74,496.15	47,786.31		122,282.46
250 Unemployment Compensation	341.73	235.55	18.56	595.84
260 Workers' Compensation	3,475.98	2,403.39	167.02	6,046.39
270 Group Insurance – Self-Insurance	13,742.72	3,676.57	626.00	18,045.29
<b>Total Personnel Services – Employee Benefits</b>	<b>\$246,780.61</b>	<b>\$144,905.48</b>	<b>\$10,848.36</b>	<b>\$402,534.45</b>
<b>300 Purchased Professional and Technical Services</b>				
324 Professional Educational Services – Employee Training and Development Services	3,577.82	21,672.32	980.84	26,230.98
329 Professional Educational Services – Other	759.38		39,348.03	40,107.41
<b>Total Purchased Professional and Technical Services</b>	<b>\$4,337.20</b>	<b>\$21,672.32</b>	<b>\$40,328.87</b>	<b>\$66,338.39</b>
<b>500 Other Purchased Services</b>				
530 Communications	212.77	142.00		354.77
580 Travel	145.87	97.24		243.11
<b>Total Other Purchased Services</b>	<b>\$358.64</b>	<b>\$239.24</b>		<b>\$597.88</b>
<b>600 Supplies</b>				
610 General Supplies	14,063.59	25,379.42		39,443.01
640 Books and Periodicals	1,770.64	2,878.12		4,648.76
650 Supplies & Fees – Technology Related	3,994.40	1,561.00		5,555.40
<b>Total Supplies</b>	<b>\$19,828.63</b>	<b>\$29,818.54</b>		<b>\$49,647.17</b>
<b>700 Property</b>				
766 Capitalized Technology Hardware and Equipment – Replacement	160,694.83	113,755.23		274,450.06
<b>Total Property</b>	<b>\$160,694.83</b>	<b>\$113,755.23</b>		<b>\$274,450.06</b>
<b>Total 2200 Support Services – Instructional Staff</b>	<b>\$747,717.48</b>	<b>\$525,730.53</b>	<b>\$70,229.92</b>	<b>\$1,343,677.93</b>

LEA : 125235103 Interboro SD

Printed 11/8/2018 2:03:00 PM

Page - 12 of 57

## General Fund (10)

## 2220 Technology Support Services

600 Supplies

610 General Supplies

**Total Supplies**700 Property

766 Capitalized Technology Hardware and Equipment – Replacement

**Total Property****Total 2220 Technology Support Services**ElementarySecondaryFederalTotal

12,497.53

22,386.29

34,883.82

**\$12,497.53****\$22,386.29****\$34,883.82**

160,694.83

113,755.23

274,450.06

**\$160,694.83****\$113,755.23****\$274,450.06****\$173,192.36****\$136,141.52****\$309,333.88**

LEA : 125235103 Interboro SD

Printed 11/8/2018 2:03:00 PM

Page - 13 of 57

## General Fund (10)

2250 School Library Services	<u>Elementary</u>	<u>Secondary</u>	<u>Federal</u>	<u>Total</u>
<b>100 Personnel Services – Salaries</b>				
100 Personnel Services – Salaries	261,515.49	160,379.24		421,894.73
<b>Total Personnel Services – Salaries</b>	<b>\$261,515.49</b>	<b>\$160,379.24</b>		<b>\$421,894.73</b>
<b>200 Personnel Services – Employee Benefits</b>				
210 Group Insurance – Contracted Provider	33,123.58	8,572.53		41,696.11
220 Social Security Contributions	19,489.16	12,102.64		31,591.80
230 PSERS Retirement Contributions	80,125.57	48,042.95		128,168.52
250 Unemployment Compensation	276.87	170.80		447.67
260 Workers' Compensation	2,884.54	1,778.03		4,662.57
270 Group Insurance – Self-Insurance	13,742.72	3,676.57		17,419.29
<b>Total Personnel Services – Employee Benefits</b>	<b>\$149,642.44</b>	<b>\$74,343.52</b>		<b>\$223,985.96</b>
<b>600 Supplies</b>				
610 General Supplies	909.13	2,385.11		3,294.24
640 Books and Periodicals	1,446.90	2,662.24		4,109.14
650 Supplies & Fees – Technology Related	3,994.40	1,561.00		5,555.40
<b>Total Supplies</b>	<b>\$6,350.43</b>	<b>\$6,608.35</b>		<b>\$12,958.78</b>
<b>Total 2250 School Library Services</b>	<b>\$417,508.36</b>	<b>\$241,331.11</b>		<b>\$658,839.47</b>



LEA : 125235103 Interboro SD

Printed 11/8/2018 2:03:00 PM

Page - 14 of 57

## General Fund (10)

## 2260 Instruction and Curriculum Development Services

	<u>Elementary</u>	<u>Secondary</u>	<u>Federal</u>	<u>Total</u>
<b>100 Personnel Services – Salaries</b>				
100 Personnel Services – Salaries	47,391.10	48,149.46		95,540.56
<b>Total Personnel Services – Salaries</b>	<b>\$47,391.10</b>	<b>\$48,149.46</b>		<b>\$95,540.56</b>
<b>200 Personnel Services – Employee Benefits</b>				
210 Group Insurance – Contracted Provider	126.05	12.31		138.36
220 Social Security Contributions	3,530.31	3,671.96		7,202.27
230 PSERS Retirement Contributions	15,590.77	15,662.65		31,253.42
250 Unemployment Compensation	50.19	51.53		101.72
260 Workers' Compensation	501.46	534.30		1,035.76
<b>Total Personnel Services – Employee Benefits</b>	<b>\$19,798.78</b>	<b>\$19,932.75</b>		<b>\$39,731.53</b>
<b>300 Purchased Professional and Technical Services</b>				
324 Professional Educational Services – Employee Training and Development Services	3,577.82	2,385.20		5,963.02
<b>Total Purchased Professional and Technical Services</b>	<b>\$3,577.82</b>	<b>\$2,385.20</b>		<b>\$5,963.02</b>
<b>500 Other Purchased Services</b>				
530 Communications	212.77	142.00		354.77
580 Travel	145.87	97.24		243.11
<b>Total Other Purchased Services</b>	<b>\$358.64</b>	<b>\$239.24</b>		<b>\$597.88</b>
<b>600 Supplies</b>				
610 General Supplies	656.93	437.95		1,094.88
640 Books and Periodicals	323.74	215.88		539.62
<b>Total Supplies</b>	<b>\$980.67</b>	<b>\$653.83</b>		<b>\$1,634.50</b>
<b>Total 2260 Instruction and Curriculum Development Services</b>	<b>\$72,107.01</b>	<b>\$71,360.48</b>		<b>\$143,467.49</b>

LEA : 125235103 Interboro SD

Printed 11/8/2018 2:03:00 PM

Page - 15 of 57

## General Fund (10)

2270 Instructional Staff Professional Development Services	<u>Elementary</u>	<u>Secondary</u>	<u>Federal</u>	<u>Total</u>
<b>100 Personnel Services – Salaries</b>				
100 Personnel Services – Salaries	6,810.98	6,811.02	19,052.69	32,674.69
<b>Total Personnel Services – Salaries</b>	<b>\$6,810.98</b>	<b>\$6,811.02</b>	<b>\$19,052.69</b>	<b>\$32,674.69</b>
<b>200 Personnel Services – Employee Benefits</b>				
210 Group Insurance – Contracted Provider			2,465.29	2,465.29
220 Social Security Contributions	520.26	520.26	1,521.55	2,562.07
230 PSERS Retirement Contributions	2,218.33	2,218.36	6,049.94	10,486.63
240 Tuition Reimbursement	74,496.15	47,786.31		122,282.46
250 Unemployment Compensation	14.67	13.22	18.56	46.45
260 Workers' Compensation	89.98	91.06	167.02	348.06
270 Group Insurance – Self-Insurance			626.00	626.00
<b>Total Personnel Services – Employee Benefits</b>	<b>\$77,339.39</b>	<b>\$50,629.21</b>	<b>\$10,848.36</b>	<b>\$138,816.96</b>
<b>300 Purchased Professional and Technical Services</b>				
324 Professional Educational Services – Employee Training and Development Services		19,287.12	980.84	20,267.96
329 Professional Educational Services – Other	759.38		39,348.03	40,107.41
<b>Total Purchased Professional and Technical Services</b>	<b>\$759.38</b>	<b>\$19,287.12</b>	<b>\$40,328.87</b>	<b>\$60,375.37</b>
<b>600 Supplies</b>				
610 General Supplies		170.07		170.07
<b>Total Supplies</b>		<b>\$170.07</b>		<b>\$170.07</b>
<b>Total 2270 Instructional Staff Professional Development Services</b>	<b>\$84,909.75</b>	<b>\$76,897.42</b>	<b>\$70,229.92</b>	<b>\$232,037.09</b>



LEA : 125235103 Interboro SD

Printed 11/8/2018 2:03:00 PM

Page - 16 of 57

## General Fund (10)

## 2300 Support Services – Administration

100 Personnel Services – Salaries

	<u>Elementary</u>	<u>Secondary</u>	<u>Federal</u>	<u>Total</u>
100 Personnel Services – Salaries	968,294.58	1,042,921.32		2,599,019.25
<b>Total Personnel Services – Salaries</b>	<b>\$968,294.58</b>	<b>\$1,042,921.32</b>		<b>\$2,599,019.25</b>

200 Personnel Services – Employee Benefits

210 Group Insurance – Contracted Provider	174,212.50	218,510.49		464,799.87
220 Social Security Contributions	73,088.48	78,618.89		193,857.77
230 PSERS Retirement Contributions	297,767.10	328,286.03		807,914.89
250 Unemployment Compensation	1,028.48	1,096.38		2,753.33
260 Workers' Compensation	10,702.36	11,238.20		28,329.49
270 Group Insurance – Self-Insurance	52,461.35	66,230.26		148,013.64
291 Other Retirement Plans	36,077.20	14,621.39		60,821.67
<b>Total Personnel Services – Employee Benefits</b>	<b>\$645,337.47</b>	<b>\$718,601.64</b>		<b>\$1,706,490.66</b>

300 Purchased Professional and Technical Services

310 Official / Administrative Services				1,600.00
324 Professional Educational Services – Employee Training and Development Services	262.50	162.50		523.00
330 Other Professional Services				147,505.61
<b>Total Purchased Professional and Technical Services</b>	<b>\$262.50</b>	<b>\$162.50</b>		<b>\$149,628.61</b>

400 Purchased Property Services

430 Repairs and Maintenance Services	932.00	347.59		1,279.59
440 Rentals				700.00
<b>Total Purchased Property Services</b>	<b>\$932.00</b>	<b>\$347.59</b>		<b>\$1,979.59</b>

500 Other Purchased Services

520 Insurance – General				42,269.00
530 Communications	546.17	364.11		8,581.72
549 Other Advertising/Public Relations				2,703.38
580 Travel				309.94
<b>Total Other Purchased Services</b>	<b>\$546.17</b>	<b>\$364.11</b>		<b>\$53,864.04</b>

600 Supplies

610 General Supplies	6,384.41	5,543.94		25,512.25
630 Food		2,041.30		7,599.06
640 Books and Periodicals				748.90
<b>Total Supplies</b>	<b>\$6,384.41</b>	<b>\$7,585.24</b>		<b>\$33,860.21</b>

800 Other Objects

810 Dues and Fees	3,462.00	26,377.00		48,341.13
890 Miscellaneous Expenditures				3,000.00
<b>Total Other Objects</b>	<b>\$3,462.00</b>	<b>\$26,377.00</b>		<b>\$51,341.13</b>
<b>Total 2300 Support Services – Administration</b>	<b>\$1,625,219.13</b>	<b>\$1,796,359.40</b>		<b>\$4,596,183.49</b>

## General Fund (10)

## 2310 Board Services

ElementarySecondaryFederalTotal300 Purchased Professional and Technical Services

330 Other Professional Services

3,199.00

**Total Purchased Professional and Technical Services****\$3,199.00**500 Other Purchased Services

520 Insurance – General

28,317.00

549 Other Advertising/Public Relations

2,703.38

**Total Other Purchased Services****\$31,020.38**600 Supplies

610 General Supplies

1,197.96

**Total Supplies****\$1,197.96**800 Other Objects

810 Dues and Fees

11,840.63

890 Miscellaneous Expenditures

3,000.00

**Total Other Objects****\$14,840.63****Total 2310 Board Services****\$50,257.97**



LEA : 125235103 Interboro SD

Printed 11/8/2018 2:03:00 PM

Page - 18 of 57

## General Fund (10)

## 2330 Tax Assessment and Collection Services

ElementarySecondaryFederalTotal100 Personnel Services – Salaries

100 Personnel Services – Salaries

45,000.00

**Total Personnel Services – Salaries****\$45,000.00**200 Personnel Services – Employee Benefits

210 Group Insurance – Contracted Provider

7,677.60

220 Social Security Contributions

3,426.39

230 PSERS Retirement Contributions

14,656.48

250 Unemployment Compensation

47.40

260 Workers' Compensation

486.91

270 Group Insurance – Self-Insurance

2,527.45

291 Other Retirement Plans

2,413.80

**Total Personnel Services – Employee Benefits****\$31,236.03**300 Purchased Professional and Technical Services

310 Official / Administrative Services

1,600.00

330 Other Professional Services

808.66

**Total Purchased Professional and Technical Services****\$2,408.66**500 Other Purchased Services

520 Insurance – General

13,952.00

530 Communications

7,671.44

**Total Other Purchased Services****\$21,623.44**600 Supplies

610 General Supplies

2,800.04

**Total Supplies****\$2,800.04**800 Other Objects

810 Dues and Fees

65.00

**Total Other Objects****\$65.00****Total 2330 Tax Assessment and Collection Services****\$103,133.17**

LEA : 125235103 Interboro SD

Printed 11/8/2018 2:03:00 PM

Page - 19 of 57

## General Fund (10)

## 2350 Legal and Accounting Services

ElementarySecondaryFederalTotal300 Purchased Professional and Technical Services

330 Other Professional Services

114,537.95

**Total Purchased Professional and Technical Services****\$114,537.95****Total 2350 Legal and Accounting Services****\$114,537.95**

LEA : 125235103 Interboro SD

Printed 11/8/2018 2:03:00 PM

Page - 20 of 57

## General Fund (10)

## 2360 Office of the Superintendent / Executive Director Services

Elementary

Secondary

Federal

Total

100 Personnel Services – Salaries

100 Personnel Services – Salaries

542,803.35

**Total Personnel Services – Salaries****\$542,803.35**200 Personnel Services – Employee Benefits

210 Group Insurance – Contracted Provider

64,399.28

220 Social Security Contributions

38,724.01

230 PSERS Retirement Contributions

167,205.28

250 Unemployment Compensation

581.07

260 Workers' Compensation

5,902.02

270 Group Insurance – Self-Insurance

26,794.58

291 Other Retirement Plans

7,709.28

**Total Personnel Services – Employee Benefits****\$311,315.52**300 Purchased Professional and Technical Services

324 Professional Educational Services – Employee Training and Development Services

98.00

330 Other Professional Services

28,960.00

**Total Purchased Professional and Technical Services****\$29,058.00**400 Purchased Property Services

440 Rentals

700.00

**Total Purchased Property Services****\$700.00**500 Other Purchased Services

530 Communications

546.17

364.11

910.28

580 Travel

309.94

**Total Other Purchased Services****\$546.17****\$364.11****\$1,220.22**600 Supplies

610 General Supplies

9,585.90

630 Food

5,557.76

640 Books and Periodicals

748.90

**Total Supplies****\$15,892.56**800 Other Objects

810 Dues and Fees

6,596.50

**Total Other Objects****\$6,596.50****Total 2360 Office of the Superintendent / Executive Director Services****\$546.17****\$364.11****\$907,586.15**



## General Fund (10)

2380 Office of the Principal Services	<u>Elementary</u>	<u>Secondary</u>	<u>Federal</u>	<u>Total</u>
<b>100 Personnel Services – Salaries</b>				
100 Personnel Services – Salaries	968,294.58	1,042,921.32		2,011,215.90
<b>Total Personnel Services – Salaries</b>	<b>\$968,294.58</b>	<b>\$1,042,921.32</b>		<b>\$2,011,215.90</b>
<b>200 Personnel Services – Employee Benefits</b>				
210 Group Insurance – Contracted Provider	174,212.50	218,510.49		392,722.99
220 Social Security Contributions	73,088.48	78,618.89		151,707.37
230 PSERS Retirement Contributions	297,767.10	328,286.03		626,053.13
250 Unemployment Compensation	1,028.48	1,096.38		2,124.86
260 Workers' Compensation	10,702.36	11,238.20		21,940.56
270 Group Insurance – Self-Insurance	52,461.35	66,230.26		118,691.61
291 Other Retirement Plans	36,077.20	14,621.39		50,698.59
<b>Total Personnel Services – Employee Benefits</b>	<b>\$645,337.47</b>	<b>\$718,601.64</b>		<b>\$1,363,939.11</b>
<b>300 Purchased Professional and Technical Services</b>				
324 Professional Educational Services – Employee Training and Development Services	262.50	162.50		425.00
<b>Total Purchased Professional and Technical Services</b>	<b>\$262.50</b>	<b>\$162.50</b>		<b>\$425.00</b>
<b>400 Purchased Property Services</b>				
430 Repairs and Maintenance Services	932.00	347.59		1,279.59
<b>Total Purchased Property Services</b>	<b>\$932.00</b>	<b>\$347.59</b>		<b>\$1,279.59</b>
<b>600 Supplies</b>				
610 General Supplies	6,384.41	5,543.94		11,928.35
630 Food		2,041.30		2,041.30
<b>Total Supplies</b>	<b>\$6,384.41</b>	<b>\$7,585.24</b>		<b>\$13,969.65</b>
<b>800 Other Objects</b>				
810 Dues and Fees	3,462.00	26,377.00		29,839.00
<b>Total Other Objects</b>	<b>\$3,462.00</b>	<b>\$26,377.00</b>		<b>\$29,839.00</b>
<b>Total 2380 Office of the Principal Services</b>	<b>\$1,624,672.96</b>	<b>\$1,795,995.29</b>		<b>\$3,420,668.25</b>



LEA : 125235103 Interboro SD

Printed 11/8/2018 2:03:00 PM

Page - 22 of 57

## General Fund (10)

## 2400 Support Services – Pupil Health

ElementarySecondaryFederalTotal100 Personnel Services – Salaries

100 Personnel Services – Salaries

495,662.66

**Total Personnel Services – Salaries****\$495,662.66**200 Personnel Services – Employee Benefits

210 Group Insurance – Contracted Provider

22,635.37

220 Social Security Contributions

37,819.19

230 PSERS Retirement Contributions

150,525.19

250 Unemployment Compensation

527.13

260 Workers' Compensation

5,418.17

270 Group Insurance – Self-Insurance

8,688.64

**Total Personnel Services – Employee Benefits****\$225,613.69**300 Purchased Professional and Technical Services

322 Professional Educational Services – Ius

33,483.75

43,475.08

330 Other Professional Services

33,227.67

**Total Purchased Professional and Technical Services****\$33,483.75****\$76,702.75**600 Supplies

610 General Supplies

8,641.82

**Total Supplies****\$8,641.82****Total 2400 Support Services – Pupil Health****\$33,483.75****\$806,620.92**

LEA : 125235103 Interboro SD

Printed 11/8/2018 2:03:00 PM

Page - 23 of 57

## General Fund (10)

2420 Medical Services	<u>Elementary</u>	<u>Secondary</u>	<u>Federal</u>	<u>Total</u>
100 <u>Personnel Services – Salaries</u>				
100 Personnel Services – Salaries				87,011.00
<b>Total Personnel Services – Salaries</b>				<b>\$87,011.00</b>
200 <u>Personnel Services – Employee Benefits</u>				
210 Group Insurance – Contracted Provider				7,434.39
220 Social Security Contributions				6,540.68
230 PSERS Retirement Contributions				28,339.47
250 Unemployment Compensation				92.00
260 Workers' Compensation				949.24
270 Group Insurance – Self-Insurance				2,363.28
<b>Total Personnel Services – Employee Benefits</b>				<b>\$45,719.06</b>
300 <u>Purchased Professional and Technical Services</u>				
330 Other Professional Services				3,223.75
<b>Total Purchased Professional and Technical Services</b>				<b>\$3,223.75</b>
600 <u>Supplies</u>				
610 General Supplies				3,048.58
<b>Total Supplies</b>				<b>\$3,048.58</b>
<b>Total 2420 Medical Services</b>				<b>\$139,002.39</b>

LEA : 125235103 Interboro SD

Printed 11/8/2018 2:03:00 PM

Page - 24 of 57

## General Fund (10)

## 2440 Nursing Services

ElementarySecondaryFederalTotal100 Personnel Services – Salaries

100 Personnel Services – Salaries

398,719.80

**Total Personnel Services – Salaries****\$398,719.80**200 Personnel Services – Employee Benefits

210 Group Insurance – Contracted Provider

15,170.33

220 Social Security Contributions

30,518.45

230 PSERS Retirement Contributions

118,950.94

250 Unemployment Compensation

424.55

260 Workers' Compensation

4,360.62

270 Group Insurance – Self-Insurance

6,325.36

**Total Personnel Services – Employee Benefits****\$175,750.25**300 Purchased Professional and Technical Services

330 Other Professional Services

30,003.92

**Total Purchased Professional and Technical Services****\$30,003.92**600 Supplies

610 General Supplies

5,593.24

**Total Supplies****\$5,593.24****Total 2440 Nursing Services****\$610,067.21**

LEA : 125235103 Interboro SD

Printed 11/8/2018 2:03:00 PM

Page - 25 of 57

## General Fund (10)

2450 Nonpublic Health Services	<u>Elementary</u>	<u>Secondary</u>	<u>Federal</u>	<u>Total</u>
100 <u>Personnel Services – Salaries</u>				
100 Personnel Services – Salaries				9,931.86
<b>Total Personnel Services – Salaries</b>				<b>\$9,931.86</b>
200 <u>Personnel Services – Employee Benefits</u>				
210 Group Insurance – Contracted Provider				30.65
220 Social Security Contributions				760.06
230 PSERS Retirement Contributions				3,234.78
250 Unemployment Compensation				10.58
260 Workers' Compensation				108.31
<b>Total Personnel Services – Employee Benefits</b>				<b>\$4,144.38</b>
<b>Total 2450 Nonpublic Health Services</b>				<b>\$14,076.24</b>



General Fund (10)

2490 Other Health Services	<u>Elementary</u>	<u>Secondary</u>	<u>Federal</u>	<u>Total</u>
300 <u>Purchased Professional and Technical Services</u>				
322 Professional Educational Services – lus			33,483.75	43,475.08
Total Purchased Professional and Technical Services			\$33,483.75	\$43,475.08
Total 2490 Other Health Services			\$33,483.75	\$43,475.08

LEA : 125235103 Interboro SD

Printed 11/8/2018 2:03:00 PM

Page - 27 of 57

## General Fund (10)

## 2500 Support Services – Business

ElementarySecondaryFederalTotal100 Personnel Services – Salaries

100 Personnel Services – Salaries

367,593.07

**Total Personnel Services – Salaries****\$367,593.07**200 Personnel Services – Employee Benefits

210 Group Insurance – Contracted Provider

72,587.35

220 Social Security Contributions

27,375.69

230 PSERS Retirement Contributions

113,054.91

250 Unemployment Compensation

392.01

260 Workers' Compensation

4,143.15

270 Group Insurance – Self-Insurance

24,136.66

291 Other Retirement Plans

1,402.44

**Total Personnel Services – Employee Benefits****\$243,092.21**300 Purchased Professional and Technical Services

324 Professional Educational Services – Employee Training and Development Services

561.55

330 Other Professional Services

30,240.00

**Total Purchased Professional and Technical Services****\$30,801.55**400 Purchased Property Services

430 Repairs and Maintenance Services

1,331.00

440 Rentals

4,673.04

**Total Purchased Property Services****\$6,004.04**500 Other Purchased Services

530 Communications

3,419.88

580 Travel

619.04

**Total Other Purchased Services****\$4,038.92**600 Supplies

610 General Supplies

4,811.56

630 Food

317.67

**Total Supplies****\$5,129.23**800 Other Objects

810 Dues and Fees

6,403.62

890 Miscellaneous Expenditures

4,081.37

**Total Other Objects****\$10,484.99****Total 2500 Support Services – Business****\$667,144.01**

LEA : 125235103 Interboro SD

Printed 11/8/2018 2:03:00 PM

Page - 28 of 57

## General Fund (10)

## 2510 Fiscal Services

ElementarySecondaryFederalTotal100 Personnel Services – Salaries

100 Personnel Services – Salaries

367,593.07

**Total Personnel Services – Salaries****\$367,593.07**200 Personnel Services – Employee Benefits

210 Group Insurance – Contracted Provider

72,587.35

220 Social Security Contributions

27,375.69

230 PSERS Retirement Contributions

113,054.91

250 Unemployment Compensation

392.01

260 Workers' Compensation

4,143.15

270 Group Insurance – Self-Insurance

24,136.66

291 Other Retirement Plans

1,402.44

**Total Personnel Services – Employee Benefits****\$243,092.21**300 Purchased Professional and Technical Services

324 Professional Educational Services – Employee Training and Development Services

561.55

330 Other Professional Services

30,240.00

**Total Purchased Professional and Technical Services****\$30,801.55**400 Purchased Property Services

430 Repairs and Maintenance Services

1,331.00

440 Rentals

4,673.04

**Total Purchased Property Services****\$6,004.04**500 Other Purchased Services

530 Communications

3,419.88

580 Travel

619.04

**Total Other Purchased Services****\$4,038.92**600 Supplies

610 General Supplies

4,811.56

630 Food

317.67

**Total Supplies****\$5,129.23**800 Other Objects

810 Dues and Fees

6,403.62

890 Miscellaneous Expenditures

4,081.37

**Total Other Objects****\$10,484.99****Total 2510 Fiscal Services****\$667,144.01**



## General Fund (10)

## 2511 Supervision of Fiscal Services - Head of Component

	<u>Elementary</u>	<u>Secondary</u>	<u>Federal</u>	<u>Total</u>
<b>100 Personnel Services – Salaries</b>				
100 Personnel Services – Salaries				153,813.14
<b>Total Personnel Services – Salaries</b>				<b>\$153,813.14</b>
<b>200 Personnel Services – Employee Benefits</b>				
210 Group Insurance – Contracted Provider				24,873.41
220 Social Security Contributions				11,228.00
230 PSERS Retirement Contributions				48,280.12
250 Unemployment Compensation				179.20
260 Workers' Compensation				2,227.01
270 Group Insurance – Self-Insurance				9,872.29
<b>Total Personnel Services – Employee Benefits</b>				<b>\$96,660.03</b>
<b>300 Purchased Professional and Technical Services</b>				
324 Professional Educational Services – Employee Training and Development Services				561.55
330 Other Professional Services				30,240.00
<b>Total Purchased Professional and Technical Services</b>				<b>\$30,801.55</b>
<b>400 Purchased Property Services</b>				
430 Repairs and Maintenance Services				1,331.00
440 Rentals				4,673.04
<b>Total Purchased Property Services</b>				<b>\$6,004.04</b>
<b>500 Other Purchased Services</b>				
530 Communications				3,419.88
580 Travel				619.04
<b>Total Other Purchased Services</b>				<b>\$4,038.92</b>
<b>600 Supplies</b>				
610 General Supplies				4,811.56
630 Food				317.67
<b>Total Supplies</b>				<b>\$5,129.23</b>
<b>800 Other Objects</b>				
810 Dues and Fees				6,403.62
890 Miscellaneous Expenditures				4,081.37
<b>Total Other Objects</b>				<b>\$10,484.99</b>
<b>Total 2511 Supervision of Fiscal Services - Head of Component</b>				<b>\$306,931.90</b>



LEA : 125235103 Interboro SD

Printed 11/8/2018 2:03:00 PM

Page - 30 of 57

## General Fund (10)

## 2512 Budgeting Services

ElementarySecondaryFederalTotal100 Personnel Services – Salaries

100 Personnel Services – Salaries

28,582.56

**Total Personnel Services – Salaries****\$28,582.56**200 Personnel Services – Employee Benefits

210 Group Insurance – Contracted Provider

2,767.58

220 Social Security Contributions

2,187.37

230 PSERS Retirement Contributions

9,309.29

250 Unemployment Compensation

28.60

260 Workers' Compensation

257.39

270 Group Insurance – Self-Insurance

1,067.60

**Total Personnel Services – Employee Benefits****\$15,617.83****Total 2512 Budgeting Services****\$44,200.39**

LEA : 125235103 Interboro SD

Printed 11/8/2018 2:03:00 PM

Page - 31 of 57

## General Fund (10)

2513 Receiving and Disbursing Funds Services	<u>Elementary</u>	<u>Secondary</u>	<u>Federal</u>	<u>Total</u>
100 <u>Personnel Services – Salaries</u>				
100 Personnel Services – Salaries				32,652.61
<b>Total Personnel Services – Salaries</b>				<b>\$32,652.61</b>
200 <u>Personnel Services – Employee Benefits</u>				
210 Group Insurance – Contracted Provider				22,552.08
220 Social Security Contributions				2,364.94
230 PSERS Retirement Contributions				10,455.40
250 Unemployment Compensation				32.08
260 Workers' Compensation				288.96
270 Group Insurance – Self-Insurance				6,553.92
<b>Total Personnel Services – Employee Benefits</b>				<b>\$42,247.38</b>
<b>Total 2513 Receiving and Disbursing Funds Services</b>				<b>\$74,899.99</b>

LEA : 125235103 Interboro SD

Printed 11/8/2018 2:03:00 PM

Page - 32 of 57

## General Fund (10)

## 2514 Payroll Services

ElementarySecondaryFederalTotal100 Personnel Services – Salaries

100 Personnel Services – Salaries

52,762.06

**Total Personnel Services – Salaries****\$52,762.06**200 Personnel Services – Employee Benefits

210 Group Insurance – Contracted Provider

17,654.02

220 Social Security Contributions

3,954.97

230 PSERS Retirement Contributions

17,064.82

250 Unemployment Compensation

52.36

260 Workers' Compensation

471.53

270 Group Insurance – Self-Insurance

4,935.36

291 Other Retirement Plans

1,402.44

**Total Personnel Services – Employee Benefits****\$45,535.50****Total 2514 Payroll Services****\$98,297.56**

LEA : 125235103 Interboro SD

Printed 11/8/2018 2:03:00 PM

Page - 33 of 57

## General Fund (10)

2515 Financial Accounting Services	<u>Elementary</u>	<u>Secondary</u>	<u>Federal</u>	<u>Total</u>
100 <u>Personnel Services – Salaries</u>				
100 Personnel Services – Salaries				76,916.75
<b>Total Personnel Services – Salaries</b>				<b>\$76,916.75</b>
200 <u>Personnel Services – Employee Benefits</u>				
210 Group Insurance – Contracted Provider				2,526.45
220 Social Security Contributions				5,890.47
230 PSERS Retirement Contributions				20,497.84
250 Unemployment Compensation				76.89
260 Workers' Compensation				692.34
270 Group Insurance – Self-Insurance				853.75
<b>Total Personnel Services – Employee Benefits</b>				<b>\$30,537.74</b>
<b>Total 2515 Financial Accounting Services</b>				<b>\$107,454.49</b>



LEA : 125235103 Interboro SD

Printed 11/8/2018 2:03:00 PM

Page - 34 of 57

## General Fund (10)

## 2516 Internal Auditing Services

ElementarySecondaryFederalTotal100 Personnel Services – Salaries

100 Personnel Services – Salaries

22,865.95

**Total Personnel Services – Salaries****\$22,865.95**200 Personnel Services – Employee Benefits

210 Group Insurance – Contracted Provider

2,213.81

220 Social Security Contributions

1,749.94

230 PSERS Retirement Contributions

7,447.44

250 Unemployment Compensation

22.88

260 Workers' Compensation

205.92

270 Group Insurance – Self-Insurance

853.74

**Total Personnel Services – Employee Benefits****\$12,493.73****Total 2516 Internal Auditing Services****\$35,359.68**

LEA : 125235103 Interboro SD

Printed 11/8/2018 2:03:00 PM

Page - 35 of 57

## General Fund (10)

## 2600 Operation and Maintenance of Plant Services

ElementarySecondaryFederalTotal100 Personnel Services – Salaries

100 Personnel Services – Salaries

1,685,381.34

**Total Personnel Services – Salaries****\$1,685,381.34**200 Personnel Services – Employee Benefits

210 Group Insurance – Contracted Provider

34,007.17

220 Social Security Contributions

129,111.32

230 PSERS Retirement Contributions

531,968.49

250 Unemployment Compensation

1,859.41

260 Workers' Compensation

18,315.89

270 Group Insurance – Self-Insurance

7,555.77

291 Other Retirement Plans

5,219.48

299 All Other Employee Benefits

597,302.49

**Total Personnel Services – Employee Benefits****\$1,325,340.02**300 Purchased Professional and Technical Services

324 Professional Educational Services – Employee Training and Development Services

95.00

330 Other Professional Services

750.00

**Total Purchased Professional and Technical Services****\$845.00**400 Purchased Property Services

410 Cleaning Services

59,842.96

420 Utility Services

89,409.05

430 Repairs and Maintenance Services

195,649.74

440 Rentals

1,760.86

460 Extermination Services

5,952.00

**Total Purchased Property Services****\$352,614.61**500 Other Purchased Services

521 Fire Insurance

74,455.00

523 General Property and Liability Insurance

47,667.00

530 Communications

74.08

580 Travel

60.40

**Total Other Purchased Services****\$122,256.48**600 Supplies

610 General Supplies

144,871.67

96,581.09

241,452.76

620 Energy

527,065.19

**Total Supplies****\$144,871.67****\$96,581.09****\$768,517.95**700 Property

752 Capital Equipment – Original and Additional

59,366.00

**Total Property****\$59,366.00**800 Other Objects

810 Dues and Fees

888.60

**Total Other Objects****\$888.60****Total 2600 Operation and Maintenance of Plant Services****\$144,871.67****\$96,581.09****\$4,315,210.00**

LEA : 125235103 Interboro SD

Printed 11/8/2018 2:03:00 PM

Page - 36 of 57

## General Fund (10)

## 2610 Supervision of Operation and Maintenance of Plant Services

ElementarySecondaryFederalTotal100 Personnel Services – Salaries

100 Personnel Services – Salaries

77,661.03

**Total Personnel Services – Salaries****\$77,661.03**200 Personnel Services – Employee Benefits

210 Group Insurance – Contracted Provider

21,160.47

220 Social Security Contributions

5,920.33

230 PSERS Retirement Contributions

25,294.18

250 Unemployment Compensation

982.01

260 Workers' Compensation

687.00

270 Group Insurance – Self-Insurance

7,291.42

291 Other Retirement Plans

5,219.48

**Total Personnel Services – Employee Benefits****\$66,554.89**500 Other Purchased Services

530 Communications

74.08

580 Travel

60.40

**Total Other Purchased Services****\$134.48**800 Other Objects

810 Dues and Fees

888.60

**Total Other Objects****\$888.60****Total 2610 Supervision of Operation and Maintenance of Plant Services****\$145,239.00**



LEA : 125235103 Interboro SD

Printed 11/8/2018 2:03:00 PM

Page - 37 of 57

## General Fund (10)

2611 Supervision of Operation and Maintenance of Plant Services – Head of Component	<u>Elementary</u>	<u>Secondary</u>	<u>Federal</u>	<u>Total</u>
<b>100 Personnel Services – Salaries</b>				
100 Personnel Services – Salaries				77,661.03
<b>Total Personnel Services – Salaries</b>				<b>\$77,661.03</b>
<b>200 Personnel Services – Employee Benefits</b>				
210 Group Insurance – Contracted Provider				21,160.47
220 Social Security Contributions				5,920.33
230 PSERS Retirement Contributions				25,294.18
250 Unemployment Compensation				982.01
260 Workers' Compensation				687.00
270 Group Insurance – Self-Insurance				7,291.42
291 Other Retirement Plans				5,219.48
<b>Total Personnel Services – Employee Benefits</b>				<b>\$66,554.89</b>
<b>500 Other Purchased Services</b>				
530 Communications				74.08
580 Travel				60.40
<b>Total Other Purchased Services</b>				<b>\$134.48</b>
<b>800 Other Objects</b>				
810 Dues and Fees				888.60
<b>Total Other Objects</b>				<b>\$888.60</b>
<b>Total 2611 Supervision of Operation and Maintenance of Plant Services – Head of Component</b>				<b>\$145,239.00</b>



LEA : 125235103 Interboro SD

Printed 11/8/2018 2:03:00 PM

Page - 38 of 57

## General Fund (10)

	<u>Elementary</u>	<u>Secondary</u>	<u>Federal</u>	<u>Total</u>
<b>2620 Operation of Buildings Services</b>				
<b>100 Personnel Services – Salaries</b>				
100 Personnel Services – Salaries				1,452,405.35
<b>Total Personnel Services – Salaries</b>				<b>\$1,452,405.35</b>
<b>200 Personnel Services – Employee Benefits</b>				
210 Group Insurance – Contracted Provider				12,078.57
220 Social Security Contributions				111,252.17
230 PSERS Retirement Contributions				456,088.21
250 Unemployment Compensation				722.01
260 Workers' Compensation				16,231.09
270 Group Insurance – Self-Insurance				264.35
299 All Other Employee Benefits				561,178.49
<b>Total Personnel Services – Employee Benefits</b>				<b>\$1,157,814.89</b>
<b>300 Purchased Professional and Technical Services</b>				
324 Professional Educational Services – Employee Training and Development Services				95.00
330 Other Professional Services				750.00
<b>Total Purchased Professional and Technical Services</b>				<b>\$845.00</b>
<b>400 Purchased Property Services</b>				
410 Cleaning Services				59,842.96
420 Utility Services				89,409.05
430 Repairs and Maintenance Services				146,070.53
440 Rentals				847.11
460 Extermination Services				5,952.00
<b>Total Purchased Property Services</b>				<b>\$302,121.65</b>
<b>500 Other Purchased Services</b>				
521 Fire Insurance				74,455.00
523 General Property and Liability Insurance				47,667.00
<b>Total Other Purchased Services</b>				<b>\$122,122.00</b>
<b>600 Supplies</b>				
610 General Supplies	140,604.77	93,736.50		234,341.27
620 Energy				518,508.29
<b>Total Supplies</b>	<b>\$140,604.77</b>	<b>\$93,736.50</b>		<b>\$752,849.56</b>
<b>700 Property</b>				
752 Capital Equipment – Original and Additional				59,366.00
<b>Total Property</b>				<b>\$59,366.00</b>
<b>Total 2620 Operation of Buildings Services</b>	<b>\$140,604.77</b>	<b>\$93,736.50</b>		<b>\$3,847,524.45</b>

## General Fund (10)

2630 Care and Upkeep of Grounds Services	Elementary	Secondary	Federal	Total
100 <u>Personnel Services – Salaries</u>				
100 Personnel Services – Salaries				155,314.96
<b>Total Personnel Services – Salaries</b>				<b>\$155,314.96</b>
200 <u>Personnel Services – Employee Benefits</u>				
210 Group Insurance – Contracted Provider				768.13
220 Social Security Contributions				11,938.82
230 PSERS Retirement Contributions				50,586.10
250 Unemployment Compensation				155.39
260 Workers' Compensation				1,397.80
299 All Other Employee Benefits				36,124.00
<b>Total Personnel Services – Employee Benefits</b>				<b>\$100,970.24</b>
400 <u>Purchased Property Services</u>				
430 Repairs and Maintenance Services				17,155.02
<b>Total Purchased Property Services</b>				<b>\$17,155.02</b>
600 <u>Supplies</u>				
610 General Supplies	3,865.91	2,577.27		6,443.18
<b>Total Supplies</b>	<b>\$3,865.91</b>	<b>\$2,577.27</b>		<b>\$6,443.18</b>
<b>Total 2630 Care and Upkeep of Grounds Services</b>	<b>\$3,865.91</b>	<b>\$2,577.27</b>		<b>\$279,883.40</b>

General Fund (10)

2640 Care and Upkeep of Equipment Services	<u>Elementary</u>	<u>Secondary</u>	<u>Federal</u>	<u>Total</u>
400 <u>Purchased Property Services</u>				
430 Repairs and Maintenance Services				25,911.95
440 Rentals				913.75
Total Purchased Property Services				\$26,825.70
Total 2640 Care and Upkeep of Equipment Services				\$26,825.70

LEA : 125235103 Interboro SD

Printed 11/8/2018 2:03:00 PM

Page - 41 of 57

## General Fund (10)

2650 Vehicle Operation and Maintenance Services (Other Than Student Transportation Vehicles)	<u>Elementary</u>	<u>Secondary</u>	<u>Federal</u>	<u>Total</u>
400 <u>Purchased Property Services</u>				
430 Repairs and Maintenance Services				6,512.24
<b>Total Purchased Property Services</b>				<b>\$6,512.24</b>
600 <u>Supplies</u>				
610 General Supplies	400.99	267.32		668.31
620 Energy				8,556.90
<b>Total Supplies</b>	<b>\$400.99</b>	<b>\$267.32</b>		<b>\$9,225.21</b>
<b>Total 2650 Vehicle Operation and Maintenance Services (Other Than Student Transportation Vehicles)</b>	<b>\$400.99</b>	<b>\$267.32</b>		<b>\$15,737.45</b>



LEA : 125235103 Interboro SD

Printed 11/8/2018 2:03:00 PM

Page - 42 of 57

## General Fund (10)

	<u>Elementary</u>	<u>Secondary</u>	<u>Federal</u>	<u>Total</u>
<b>2700 Student Transportation Services</b>				
<b>100 Personnel Services – Salaries</b>				
100 Personnel Services – Salaries				1,349,988.74
<b>Total Personnel Services – Salaries</b>				<b>\$1,349,988.74</b>
<b>200 Personnel Services – Employee Benefits</b>				
210 Group Insurance – Contracted Provider				35,726.24
220 Social Security Contributions				103,086.43
230 PSERS Retirement Contributions				392,391.84
250 Unemployment Compensation				1,451.09
260 Workers' Compensation				14,861.45
270 Group Insurance – Self-Insurance				10,864.19
<b>Total Personnel Services – Employee Benefits</b>				<b>\$558,381.24</b>
<b>300 Purchased Professional and Technical Services</b>				
330 Other Professional Services				3,280.65
<b>Total Purchased Professional and Technical Services</b>				<b>\$3,280.65</b>
<b>400 Purchased Property Services</b>				
430 Repairs and Maintenance Services				38,176.09
440 Rentals				307,000.00
<b>Total Purchased Property Services</b>				<b>\$345,176.09</b>
<b>500 Other Purchased Services</b>				
513 Contracted Carriers				377,850.00
516 Student Transportation Services From the IU				92,015.62
522 Automotive Liability Insurance				38,035.00
530 Communications				203.26
580 Travel				591.64
<b>Total Other Purchased Services</b>				<b>\$508,695.52</b>
<b>600 Supplies</b>				
610 General Supplies				4,418.82
620 Energy				96,246.74
630 Food				360.00
<b>Total Supplies</b>				<b>\$101,025.56</b>
<b>800 Other Objects</b>				
810 Dues and Fees				335.44
<b>Total Other Objects</b>				<b>\$335.44</b>
<b>Total 2700 Student Transportation Services</b>				<b>\$2,866,883.24</b>

## General Fund (10)

2710 Supervision of Student Transportation Services	<u>Elementary</u>	<u>Secondary</u>	<u>Federal</u>	<u>Total</u>
100 <u>Personnel Services – Salaries</u>				
100 Personnel Services – Salaries				95,298.94
<b>Total Personnel Services – Salaries</b>				<b>\$95,298.94</b>
200 <u>Personnel Services – Employee Benefits</u>				
210 Group Insurance – Contracted Provider				23,734.83
220 Social Security Contributions				7,158.84
230 PSERS Retirement Contributions				28,592.91
250 Unemployment Compensation				486.51
260 Workers' Compensation				849.93
270 Group Insurance – Self-Insurance				7,486.18
<b>Total Personnel Services – Employee Benefits</b>				<b>\$68,309.20</b>
300 <u>Purchased Professional and Technical Services</u>				
330 Other Professional Services				2,296.46
<b>Total Purchased Professional and Technical Services</b>				<b>\$2,296.46</b>
500 <u>Other Purchased Services</u>				
530 Communications				142.27
580 Travel				407.73
<b>Total Other Purchased Services</b>				<b>\$550.00</b>
600 <u>Supplies</u>				
610 General Supplies				3,099.15
630 Food				360.00
<b>Total Supplies</b>				<b>\$3,459.15</b>
800 <u>Other Objects</u>				
810 Dues and Fees				190.00
<b>Total Other Objects</b>				<b>\$190.00</b>
<b>Total 2710 Supervision of Student Transportation Services</b>				<b>\$170,103.75</b>

LEA : 125235103 Interboro SD

Printed 11/8/2018 2:03:00 PM

Page - 44 of 57

## General Fund (10)

## 2711 Supervision of Student Transportation Services – Head of Component

	<u>Elementary</u>	<u>Secondary</u>	<u>Federal</u>	<u>Total</u>
<b>100 Personnel Services – Salaries</b>				
100 Personnel Services – Salaries				26,083.79
<b>Total Personnel Services – Salaries</b>				<b>\$26,083.79</b>
<b>200 Personnel Services – Employee Benefits</b>				
210 Group Insurance – Contracted Provider				9,906.30
220 Social Security Contributions				1,979.31
230 PSERS Retirement Contributions				8,495.40
250 Unemployment Compensation				26.05
260 Workers' Compensation				234.79
270 Group Insurance – Self-Insurance				2,915.94
<b>Total Personnel Services – Employee Benefits</b>				<b>\$23,557.79</b>
<b>300 Purchased Professional and Technical Services</b>				
330 Other Professional Services				2,296.46
<b>Total Purchased Professional and Technical Services</b>				<b>\$2,296.46</b>
<b>500 Other Purchased Services</b>				
530 Communications				142.27
580 Travel				407.73
<b>Total Other Purchased Services</b>				<b>\$550.00</b>
<b>600 Supplies</b>				
610 General Supplies				3,099.15
630 Food				360.00
<b>Total Supplies</b>				<b>\$3,459.15</b>
<b>800 Other Objects</b>				
810 Dues and Fees				190.00
<b>Total Other Objects</b>				<b>\$190.00</b>
<b>Total 2711 Supervision of Student Transportation Services – Head of Component</b>				<b>\$56,137.19</b>



LEA : 125235103 Interboro SD

Printed 11/8/2018 2:03:00 PM

Page - 45 of 57

## General Fund (10)

## 2719 Supervision of Student Transportation Services – All Other Supervision

ElementarySecondaryFederalTotal100 Personnel Services – Salaries

100 Personnel Services – Salaries

69,215.15

**Total Personnel Services – Salaries****\$69,215.15**200 Personnel Services – Employee Benefits

210 Group Insurance – Contracted Provider

13,828.53

220 Social Security Contributions

5,179.53

230 PSERS Retirement Contributions

20,097.51

250 Unemployment Compensation

460.46

260 Workers' Compensation

615.14

270 Group Insurance – Self-Insurance

4,570.24

**Total Personnel Services – Employee Benefits****\$44,751.41****Total 2719 Supervision of Student Transportation Services – All Other Supervision****\$113,966.56**



LEA : 125235103 Interboro SD

Printed 11/8/2018 2:03:00 PM

Page - 46 of 57

## General Fund (10)

## 2720 Vehicle Operation Services

ElementarySecondaryFederalTotal100 Personnel Services – Salaries

100 Personnel Services – Salaries

566,678.76

**Total Personnel Services – Salaries****\$566,678.76**200 Personnel Services – Employee Benefits

210 Group Insurance – Contracted Provider

1,273.28

220 Social Security Contributions

43,351.86

230 PSERS Retirement Contributions

174,886.69

250 Unemployment Compensation

258.84

260 Workers' Compensation

7,251.51

270 Group Insurance – Self-Insurance

118.58

**Total Personnel Services – Employee Benefits****\$227,140.76**400 Purchased Property Services

440 Rentals

214,900.00

**Total Purchased Property Services****\$214,900.00**500 Other Purchased Services

513 Contracted Carriers

377,850.00

516 Student Transportation Services From the IU

85,989.80

522 Automotive Liability Insurance

26,624.10

580 Travel

53.60

**Total Other Purchased Services****\$490,517.50**600 Supplies

620 Energy

65,929.49

**Total Supplies****\$65,929.49**800 Other Objects

810 Dues and Fees

101.81

**Total Other Objects****\$101.81****Total 2720 Vehicle Operation Services****\$1,565,268.32**

## General Fund (10)

## 2730 Monitoring Services

ElementarySecondaryFederalTotal100 Personnel Services – Salaries

100 Personnel Services – Salaries

415,781.96

**Total Personnel Services – Salaries****\$415,781.96**200 Personnel Services – Employee Benefits

220 Social Security Contributions

31,806.46

230 PSERS Retirement Contributions

104,167.72

250 Unemployment Compensation

415.78

260 Workers' Compensation

3,741.86

**Total Personnel Services – Employee Benefits****\$140,131.82****Total 2730 Monitoring Services****\$555,913.78**

General Fund (10)

2740 Vehicle Servicing and Maintenance Services	<u>Elementary</u>	<u>Secondary</u>	<u>Federal</u>	<u>Total</u>
400 <u>Purchased Property Services</u>				
430 Repairs and Maintenance Services				26,562.58
Total Purchased Property Services				\$26,562.58
Total 2740 Vehicle Servicing and Maintenance Services				\$26,562.58

LEA : 125235103 Interboro SD

Printed 11/8/2018 2:03:00 PM

Page - 49 of 57

## General Fund (10)

## 2750 Nonpublic Transportation

ElementarySecondaryFederalTotal100 Personnel Services – Salaries

100 Personnel Services – Salaries

272,229.08

**Total Personnel Services – Salaries****\$272,229.08**200 Personnel Services – Employee Benefits

210 Group Insurance – Contracted Provider

10,718.13

220 Social Security Contributions

20,769.27

230 PSERS Retirement Contributions

84,744.52

250 Unemployment Compensation

289.96

260 Workers' Compensation

3,018.15

270 Group Insurance – Self-Insurance

3,259.43

**Total Personnel Services – Employee Benefits****\$122,799.46**300 Purchased Professional and Technical Services

330 Other Professional Services

984.19

**Total Purchased Professional and Technical Services****\$984.19**400 Purchased Property Services

430 Repairs and Maintenance Services

11,613.51

440 Rentals

92,100.00

**Total Purchased Property Services****\$103,713.51**500 Other Purchased Services

516 Student Transportation Services From the IU

6,025.82

522 Automotive Liability Insurance

11,410.90

530 Communications

60.99

580 Travel

130.31

**Total Other Purchased Services****\$17,628.02**600 Supplies

610 General Supplies

1,319.67

620 Energy

30,317.25

**Total Supplies****\$31,636.92**800 Other Objects

810 Dues and Fees

43.63

**Total Other Objects****\$43.63****Total 2750 Nonpublic Transportation****\$549,034.81**



LEA : 125235103 Interboro SD

Printed 11/8/2018 2:03:00 PM

Page - 50 of 57

## General Fund (10)

## 2800 Support Services – Central

ElementarySecondaryFederalTotal100 Personnel Services – Salaries

100 Personnel Services – Salaries

619,261.60

**Total Personnel Services – Salaries****\$619,261.60**200 Personnel Services – Employee Benefits

210 Group Insurance – Contracted Provider

102,931.13

220 Social Security Contributions

46,438.97

230 PSERS Retirement Contributions

193,243.98

250 Unemployment Compensation

661.46

260 Workers' Compensation

6,894.74

270 Group Insurance – Self-Insurance

31,725.18

291 Other Retirement Plans

5,076.42

**Total Personnel Services – Employee Benefits****\$386,971.88**300 Purchased Professional and Technical Services

324 Professional Educational Services – Employee Training and Development Services

2,571.54

330 Other Professional Services

54,694.04

**Total Purchased Professional and Technical Services****\$57,265.58**400 Purchased Property Services

430 Repairs and Maintenance Services

28,965.41

440 Rentals

80,932.92

**Total Purchased Property Services****\$109,898.33**500 Other Purchased Services

520 Insurance – General

13,558.00

530 Communications

23,239.92

580 Travel

3,554.54

**Total Other Purchased Services****\$40,352.46**600 Supplies

610 General Supplies

22,126.73

650 Supplies &amp; Fees – Technology Related

287,588.93

**Total Supplies****\$309,715.66**800 Other Objects

810 Dues and Fees

345.00

**Total Other Objects****\$345.00****Total 2800 Support Services – Central****\$1,523,810.51**

## General Fund (10)

## 2830 Staff Services

	<u>Elementary</u>	<u>Secondary</u>	<u>Federal</u>	<u>Total</u>
<b>100 Personnel Services – Salaries</b>				
100 Personnel Services – Salaries				230,831.80
<b>Total Personnel Services – Salaries</b>				<b>\$230,831.80</b>
<b>200 Personnel Services – Employee Benefits</b>				
210 Group Insurance – Contracted Provider				31,009.32
220 Social Security Contributions				17,044.90
230 PSERS Retirement Contributions				70,627.88
250 Unemployment Compensation				244.17
260 Workers' Compensation				2,532.74
270 Group Insurance – Self-Insurance				9,059.53
291 Other Retirement Plans				5,076.42
<b>Total Personnel Services – Employee Benefits</b>				<b>\$135,594.96</b>
<b>300 Purchased Professional and Technical Services</b>				
330 Other Professional Services				8,594.00
<b>Total Purchased Professional and Technical Services</b>				<b>\$8,594.00</b>
<b>500 Other Purchased Services</b>				
530 Communications				571.68
<b>Total Other Purchased Services</b>				<b>\$571.68</b>
<b>600 Supplies</b>				
610 General Supplies				493.57
<b>Total Supplies</b>				<b>\$493.57</b>
<b>800 Other Objects</b>				
810 Dues and Fees				225.00
<b>Total Other Objects</b>				<b>\$225.00</b>
<b>Total 2830 Staff Services</b>				<b>\$376,311.01</b>

LEA : 125235103 Interboro SD

Printed 11/8/2018 2:03:00 PM

Page - 52 of 57

## General Fund (10)

	<u>Elementary</u>	<u>Secondary</u>	<u>Federal</u>	<u>Total</u>
<b>2831 Supervision of Staff Services</b>				
<b>100 Personnel Services – Salaries</b>				
100 Personnel Services – Salaries				169,326.80
<b>Total Personnel Services – Salaries</b>				<b>\$169,326.80</b>
<b>200 Personnel Services – Employee Benefits</b>				
210 Group Insurance – Contracted Provider				26,916.74
220 Social Security Contributions				14,248.35
230 PSERS Retirement Contributions				59,070.85
250 Unemployment Compensation				208.62
260 Workers' Compensation				2,213.39
270 Group Insurance – Self-Insurance				7,687.51
291 Other Retirement Plans				5,076.42
<b>Total Personnel Services – Employee Benefits</b>				<b>\$115,421.88</b>
<b>500 Other Purchased Services</b>				
530 Communications				571.68
<b>Total Other Purchased Services</b>				<b>\$571.68</b>
<b>600 Supplies</b>				
610 General Supplies				493.57
<b>Total Supplies</b>				<b>\$493.57</b>
<b>Total 2831 Supervision of Staff Services</b>				<b>\$285,813.93</b>



## General Fund (10)

## 2832 Recruitment and Placement Services

ElementarySecondaryFederalTotal300 Purchased Professional and Technical Services

330 Other Professional Services

8,594.00

**Total Purchased Professional and Technical Services****\$8,594.00**800 Other Objects

810 Dues and Fees

225.00

**Total Other Objects****\$225.00****Total 2832 Recruitment and Placement Services****\$8,819.00**



LEA : 125235103 Interboro SD

Printed 11/8/2018 2:03:00 PM

Page - 54 of 57

## General Fund (10)

## 2833 Staff Accounting Services

ElementarySecondaryFederalTotal100 Personnel Services – Salaries

100 Personnel Services – Salaries

61,505.00

**Total Personnel Services – Salaries****\$61,505.00**200 Personnel Services – Employee Benefits

210 Group Insurance – Contracted Provider

4,092.58

220 Social Security Contributions

2,796.55

230 PSERS Retirement Contributions

11,557.03

250 Unemployment Compensation

35.55

260 Workers' Compensation

319.35

270 Group Insurance – Self-Insurance

1,372.02

**Total Personnel Services – Employee Benefits****\$20,173.08****Total 2833 Staff Accounting Services****\$81,678.08**

LEA : 125235103 Interboro SD

Printed 11/8/2018 2:03:00 PM

Page - 55 of 57

## General Fund (10)

## 2840 Data Processing Services

ElementarySecondaryFederalTotal100 Personnel Services – Salaries

100 Personnel Services – Salaries

388,429.80

**Total Personnel Services – Salaries****\$388,429.80**200 Personnel Services – Employee Benefits

210 Group Insurance – Contracted Provider

71,921.81

220 Social Security Contributions

29,394.07

230 PSERS Retirement Contributions

122,616.10

250 Unemployment Compensation

417.29

260 Workers' Compensation

4,362.00

270 Group Insurance – Self-Insurance

22,665.65

**Total Personnel Services – Employee Benefits****\$251,376.92**300 Purchased Professional and Technical Services

324 Professional Educational Services – Employee Training and Development Services

2,571.54

330 Other Professional Services

46,100.04

**Total Purchased Professional and Technical Services****\$48,671.58**400 Purchased Property Services

430 Repairs and Maintenance Services

28,965.41

440 Rentals

80,932.92

**Total Purchased Property Services****\$109,898.33**500 Other Purchased Services

520 Insurance – General

13,558.00

530 Communications

22,668.24

580 Travel

3,554.54

**Total Other Purchased Services****\$39,780.78**600 Supplies

610 General Supplies

21,633.16

650 Supplies &amp; Fees – Technology Related

287,588.93

**Total Supplies****\$309,222.09**800 Other Objects

810 Dues and Fees

120.00

**Total Other Objects****\$120.00****Total 2840 Data Processing Services****\$1,147,499.50**

General Fund (10)

2900 Other Support Services	<u>Elementary</u>	<u>Secondary</u>	<u>Federal</u>	<u>Total</u>
500 <u>Other Purchased Services</u>				
595 IU Payments By Withholding				37,655.41
Total Other Purchased Services				\$37,655.41
Total 2900 Other Support Services				\$37,655.41

LEA : 125235103 Interboro SD

Printed 11/8/2018 2:03:00 PM

Page - 57 of 57

## General Fund (10)

## 2910 Support Services Not Listed Elsewhere In the 2000 Series

ElementarySecondaryFederalTotal500 Other Purchased Services

595 IU Payments By Withholding

37,655.41

**Total Other Purchased Services****\$37,655.41****Total 2910 Support Services Not Listed Elsewhere In the 2000 Series****\$37,655.41**



LEA : 125235103 Interboro SD

Printed 11/8/2018 2:03:03 PM

Page - 1 of 3

## General Fund (10)

## 3000 Operation of Non-Instructional Services

Total100 Personnel Services – Salaries

100 Personnel Services – Salaries

510,182.37

**Total Personnel Services – Salaries****\$510,182.37**200 Personnel Services – Employee Benefits

210 Group Insurance – Contracted Provider

1,108.08

220 Social Security Contributions

38,738.74

230 PSERS Retirement Contributions

120,890.75

250 Unemployment Compensation

536.30

260 Workers' Compensation

5,574.88

291 Other Retirement Plans

1,152.93

**Total Personnel Services – Employee Benefits****\$168,001.68**300 Purchased Professional and Technical Services

329 Professional Educational Services – Other

10,000.00

350 Security / Safety Services

102,325.97

390 Other Purchased Professional and Technical Services

97,289.60

**Total Purchased Professional and Technical Services****\$209,615.57**400 Purchased Property Services

430 Repairs and Maintenance Services

2,366.92

440 Rentals

5,340.00

**Total Purchased Property Services****\$7,706.92**500 Other Purchased Services

520 Insurance – General

13,648.23

580 Travel

445.20

**Total Other Purchased Services****\$14,093.43**600 Supplies

610 General Supplies

49,056.76

630 Food

283.56

650 Supplies &amp; Fees – Technology Related

2,599.00

**Total Supplies****\$51,939.32**800 Other Objects

810 Dues and Fees

12,828.52

890 Miscellaneous Expenditures

927.00

**Total Other Objects****\$13,755.52****Total 3000 Operation of Non-Instructional Services****\$975,294.81**

LEA : 125235103 Interboro SD

Printed 11/8/2018 2:03:03 PM

Page - 2 of 3

## General Fund (10)

## 3200 Student Activities

ElementarySecondaryFederalTotal100 Personnel Services – Salaries

100 Personnel Services – Salaries

509,907.13

**Total Personnel Services – Salaries****\$509,907.13**200 Personnel Services – Employee Benefits

210 Group Insurance – Contracted Provider

1,108.08

220 Social Security Contributions

38,718.04

230 PSERS Retirement Contributions

120,801.10

250 Unemployment Compensation

536.03

260 Workers' Compensation

5,572.40

291 Other Retirement Plans

1,152.93

**Total Personnel Services – Employee Benefits****\$167,888.58**300 Purchased Professional and Technical Services

329 Professional Educational Services – Other

10,000.00

350 Security / Safety Services

5,535.00

390 Other Purchased Professional and Technical Services

97,289.60

**Total Purchased Professional and Technical Services****\$112,824.60**400 Purchased Property Services

430 Repairs and Maintenance Services

2,366.92

440 Rentals

5,340.00

**Total Purchased Property Services****\$7,706.92**500 Other Purchased Services

520 Insurance – General

12,623.00

580 Travel

445.20

**Total Other Purchased Services****\$13,068.20**600 Supplies

610 General Supplies

43,442.65

630 Food

54.00

650 Supplies &amp; Fees – Technology Related

2,599.00

**Total Supplies****\$46,095.65**800 Other Objects

810 Dues and Fees

12,828.52

890 Miscellaneous Expenditures

927.00

**Total Other Objects****\$13,755.52****Total 3200 Student Activities****\$871,246.60**

LEA : 125235103 Interboro SD

Printed 11/8/2018 2:03:03 PM

Page - 3 of 3

## General Fund (10)

	<u>Elementary</u>	<u>Secondary</u>	<u>Federal</u>	<u>Total</u>
<b>3300 Community Services</b>				
<b>100 Personnel Services – Salaries</b>				
100 Personnel Services – Salaries				275.24
<b>Total Personnel Services – Salaries</b>				<b>\$275.24</b>
<b>200 Personnel Services – Employee Benefits</b>				
220 Social Security Contributions				20.70
230 PSERS Retirement Contributions				89.65
250 Unemployment Compensation				0.27
260 Workers' Compensation				2.48
<b>Total Personnel Services – Employee Benefits</b>				<b>\$113.10</b>
<b>300 Purchased Professional and Technical Services</b>				
350 Security / Safety Services				96,790.97
<b>Total Purchased Professional and Technical Services</b>				<b>\$96,790.97</b>
<b>500 Other Purchased Services</b>				
520 Insurance – General				1,025.23
<b>Total Other Purchased Services</b>				<b>\$1,025.23</b>
<b>600 Supplies</b>				
610 General Supplies			4,305.03	5,614.11
630 Food			221.74	229.56
<b>Total Supplies</b>			<b>\$4,526.77</b>	<b>\$5,843.67</b>
<b>Total 3300 Community Services</b>			<b>\$4,526.77</b>	<b>\$104,048.21</b>



## General Fund (10)

## 4000 Facilities Acquisition, Construction and Improvement Services

Total400 Purchased Property Services

450 Construction Services

34,083.05

**Total Purchased Property Services****\$34,083.05****Total 4000 Facilities Acquisition, Construction and Improvement Services****\$34,083.05**



General Fund (10)				
4600 Existing Building Improvement Services	<u>Elementary</u>	<u>Secondary</u>	<u>Federal</u>	<u>Total</u>
400 <u>Purchased Property Services</u>				
450 Construction Services				34,083.05
Total Purchased Property Services				\$34,083.05
Total 4600 Existing Building Improvement Services				\$34,083.05

## General Fund (10)

## 5000 Other Expenditures and Financing Uses

Total800 Other Objects

830 Interest

1,770,963.09

**Total Other Objects****\$1,770,963.09**900 Other Uses of Funds

910 Redemption of Principal

2,507,306.83

**Total Other Uses of Funds****\$2,507,306.83****Total 5000 Other Expenditures and Financing Uses****\$4,278,269.92**

General Fund (10)

5100 Debt Service / Other Expenditures and Financing Uses	<u>Elementary</u>	<u>Secondary</u>	<u>Federal</u>	<u>Total</u>
800 <u>Other Objects</u>				
830 Interest				1,770,963.09
Total Other Objects				\$1,770,963.09
900 <u>Other Uses of Funds</u>				
910 Redemption of Principal				2,507,306.83
Total Other Uses of Funds				\$2,507,306.83
Total 5100 Debt Service / Other Expenditures and Financing Uses				\$4,278,269.92

LEA : 125235103 Interboro SD

Printed 11/8/2018 2:03:09 PM

Page - 3 of 3

## General Fund (10)

## 5110 Debt Service

ElementarySecondaryFederalTotal800 Other Objects

830 Interest

1,770,963.09

**Total Other Objects****\$1,770,963.09**900 Other Uses of Funds

910 Redemption of Principal

2,507,306.83

**Total Other Uses of Funds****\$2,507,306.83****Total 5110 Debt Service****\$4,278,269.92**



Capital Reserve Fund - § 1431 (32)

4000 Facilities Acquisition, Construction and Improvement Services

Total

700 <u>Property</u>	
752 Capital Equipment – Original and Additional	104,988.00
<b>Total Property</b>	<b>\$104,988.00</b>
<b>Total 4000 Facilities Acquisition, Construction and Improvement Services</b>	<b>\$104,988.00</b>

LEA : 125235103 Interboro SD

Printed 11/8/2018 2:03:06 PM

Page - 2 of 2

## Capital Reserve Fund - § 1431 (32)

## 4100 Site Acquisition Services – Original and Additional

ElementarySecondaryFederalTotal700 Property

752 Capital Equipment – Original and Additional

104,988.00

**Total Property****\$104,988.00****Total 4100 Site Acquisition Services – Original and Additional****\$104,988.00**

Other Capital Projects Fund (39)

4000 Facilities Acquisition, Construction and Improvement Services

Total

700 Property

752 Capital Equipment – Original and Additional

2,058,678.00

**Total Property**

**\$2,058,678.00**

**Total 4000 Facilities Acquisition, Construction and Improvement Services**

**\$2,058,678.00**

Other Capital Projects Fund (39)

4100 Site Acquisition Services – Original and Additional

<u>Elementary</u>	<u>Secondary</u>	<u>Federal</u>	<u>Total</u>
-------------------	------------------	----------------	--------------

700 Property

752 Capital Equipment – Original and Additional			2,058,678.00
---	--	--	--------------

<b>Total Property</b>			<b>\$2,058,678.00</b>
-----------------------	--	--	-----------------------

<b>Total 4100 Site Acquisition Services – Original and Additional</b>			<b>\$2,058,678.00</b>
---	--	--	-----------------------



LEA : 125235103 Interboro SD

Printed 11/8/2018 2:03:13 PM

Page - 1 of 2

	<u>General Fund(10)</u>	<u>Public Purpose Trust(27)</u>	<u>Other Compt Approved (28)</u>	<u>Athletic / Activity(29)</u>	<u>Capital Reserve (690, 1850)(31)</u>
<b>1000 Instruction</b>					
1100 Regular Programs - Elementary / Secondary	28,361,003.16				
1200 Special Programs - Elementary / Secondary	10,111,714.01				
1300 Vocational Education	1,036,796.00				
1400 Other Instructional Programs - Elementary / Secondary	554,855.49				
1600 Adult Education Programs	452,106.00				
1800 Pre-Kindergarten	78,698.39				
<b>Total Instruction</b>	<b>\$40,595,173.05</b>				
<b>2000 Support Services</b>					
2100 Support Services - Students	3,207,267.72				
2200 Support Services - Instructional Staff	1,343,677.93				
2300 Support Services - Administration	4,596,183.49				
2400 Support Services - Pupil Health	806,620.92				
2500 Support Services - Business	667,144.01				
2600 Operation and Maintenance of Plant Services	4,315,210.00				
2700 Student Transportation Services	2,866,883.24				
2800 Support Services - Central	1,523,810.51				
2900 Other Support Services	37,655.41				
<b>Total Support Services</b>	<b>\$19,364,453.23</b>				
<b>3000 Operation of Non-Instructional Services</b>					
3200 Student Activities	871,246.60				
3300 Community Services	104,048.21				
<b>Total Operation of Non-Instructional Services</b>	<b>\$975,294.81</b>				
<b>4000 Facilities Acquisition, Construction and Improvement Services</b>					
4100 Site Acquisition Services - Original and Additional					
4600 Existing Building Improvement Services	34,083.05				
<b>Total Facilities Acquisition, Construction and Improvement Services</b>	<b>\$34,083.05</b>				
<b>5000 Other Expenditures and Financing Uses</b>					
5100 Debt Service / Other Expenditures and Financing Uses	4,278,269.92				
<b>Total Other Expenditures and Financing Uses</b>	<b>\$4,278,269.92</b>				
<b>TOTAL ACTUAL EXPENDITURES &amp; OTHER FINANCING USES</b>	<b>\$65,247,274.06</b>				

	<u>Capital Reserve (1431)(32)</u>	<u>Other Capital Projects Fund(39)</u>	<u>Debt Service(40)</u>	<u>Permanent(90)</u>	<u>Total</u>
<b>1000 Instruction</b>					
1100 Regular Programs - Elementary / Secondary					28,361,003.16
1200 Special Programs - Elementary / Secondary					10,111,714.01
1300 Vocational Education					1,036,796.00
1400 Other Instructional Programs - Elementary / Secondary					554,855.49
1600 Adult Education Programs					452,106.00
1800 Pre-Kindergarten					78,698.39
<b>Total Instruction</b>					<b>\$40,595,173.05</b>
<b>2000 Support Services</b>					
2100 Support Services - Students					3,207,267.72
2200 Support Services - Instructional Staff					1,343,677.93
2300 Support Services - Administration					4,596,183.49
2400 Support Services - Pupil Health					806,620.92
2500 Support Services - Business					667,144.01
2600 Operation and Maintenance of Plant Services					4,315,210.00
2700 Student Transportation Services					2,866,883.24
2800 Support Services - Central					1,523,810.51
2900 Other Support Services					37,655.41
<b>Total Support Services</b>					<b>\$19,364,453.23</b>
<b>3000 Operation of Non-Instructional Services</b>					
3200 Student Activities					871,246.60
3300 Community Services					104,048.21
<b>Total Operation of Non-Instructional Services</b>					<b>\$975,294.81</b>
<b>4000 Facilities Acquisition, Construction and Improvement Services</b>					
4100 Site Acquisition Services - Original and Additional	104,988.00	2,058,678.00			2,163,666.00
4600 Existing Building Improvement Services					34,083.05
<b>Total Facilities Acquisition, Construction and Improvement Services</b>	<b>\$104,988.00</b>	<b>\$2,058,678.00</b>			<b>\$2,197,749.05</b>
<b>5000 Other Expenditures and Financing Uses</b>					
5100 Debt Service / Other Expenditures and Financing Uses					4,278,269.92
<b>Total Other Expenditures and Financing Uses</b>					<b>\$4,278,269.92</b>
<b>TOTAL ACTUAL EXPENDITURES &amp; OTHER FINANCING USES</b>	<b>\$104,988.00</b>	<b>\$2,058,678.00</b>			<b>\$67,410,940.06</b>

PSERS Salary Data (Salary Data should relate to the General Fund only)

Amount	Description	Amount
	Total Salary Base for salaries subject to PSERS withholding	30,703,718.15
	Total Federally Funded salaries subject to PSERS withholding	349,758.22

Title I Expenditure Data

Amount	Description	Amount
	Expenditures Funded with Current Title I Funds	342,878.58
	Expenditures Funded with Carry over Title I Funds	6,879.64
	Total Title I Expenditure Data	\$349,758.22



Benefits for Staff Relative to Collective  
Bargaining Agreements

	OBJECT	COVERED	NOT COVERED	TOTAL
10 General Fund				
	211 Medical Insurance	3,574,948.71	308,335.91	3,883,284.62
	212 Dental Insurance			
	215 Eye Care Insurance	41,747.22	2,334.53	44,081.75
	216 Prescription Insurance			
	271 Self-Insurance Medical Benefits			
	272 Self-Insurance Dental Benefits	312,547.53	20,843.33	333,390.86
	275 Self-Insurance Eye Care Benefits			
	276 Self-Insurance Prescription Benefits	843,826.51	85,617.10	929,443.61
	<b>FUND TOTAL</b>	<b>\$4,773,069.97</b>	<b>\$417,130.87</b>	<b>\$5,190,200.84</b>
50 Enterprise Fund	No Self Insurance data to report			
	211 Medical Insurance			
	212 Dental Insurance			
	215 Eye Care Insurance			
	216 Prescription Insurance			
	271 Self-Insurance Medical Benefits			
	272 Self-Insurance Dental Benefits			
	275 Self-Insurance Eye Care Benefits			
	276 Self-Insurance Prescription Benefits			
	<b>FUND TOTAL</b>			
60 Internal Service Fund	No Self Insurance data to report			
	211 Medical Insurance			
	212 Dental Insurance			
	215 Eye Care Insurance			
	216 Prescription Insurance			
	271 Self-Insurance Medical Benefits			
	272 Self-Insurance Dental Benefits			
	275 Self-Insurance Eye Care Benefits			
	276 Self-Insurance Prescription Benefits			
	<b>FUND TOTAL</b>			
<b>Total of All Funds</b>		<b>\$4,773,069.97</b>	<b>\$417,130.87</b>	<b>\$5,190,200.84</b>



LEA : 125235103 Interboro SD

Printed 11/8/2018 2:03:20 PM

Page - 1 of 1

Function	Special Education (Prior Year)	Nonspecial Education (Prior Year)	Total (Prior Year)	Special Education (Current Year)	Nonspecial Education (Current Year)	Total (Current Year)
2120 Guidance Services	339,755.73	779,589.85	1,119,345.58	365,871.78	825,850.11	1,191,721.89
2140 Psychological Services	650,283.00	72,253.67	722,536.67	692,493.60	76,943.73	769,437.33
2150 Speech Pathology and Audiology Services						
2160 Social Work Services	59,425.56	270,716.43	330,141.99	62,156.68	283,158.21	345,314.89
2260 Instruction and Curriculum Development Services	24,135.48	109,950.51	134,085.99	25,824.15	117,643.34	143,467.49
2350 Legal and Accounting Services	15,000.00	118,327.55	133,327.55	56,519.89	58,018.06	114,537.95
2420 Medical Services	14,932.96	44,798.87	59,731.83	34,750.60	104,251.79	139,002.39
2440 Nursing Services	132,458.13	397,374.38	529,832.51	152,516.80	457,550.41	610,067.21
2700 Student Transportation Services	561,298.77	2,057,973.19	2,619,271.96	803,376.01	2,063,507.14	2,866,883.15
<b>Total</b>	<b>\$1,797,289.63</b>	<b>\$3,850,984.45</b>	<b>\$5,648,274.08</b>	<b>\$2,193,509.51</b>	<b>\$3,986,922.79</b>	<b>\$6,180,432.30</b>

LEA : 125235103 Interboro SD

Printed 11/8/2018 2:03:21 PM

Page - 1 of 3

## (PRINCIPAL AMOUNTS ONLY)

GOVERNMENTAL FUNDS/ ACTIVITIES

	Short-Term Borrowing	General Obligation Bonds/Notes	Authority Building Obligations	Other Long-Term Debt	Other Post- Employment Benefits (OPEB)	Compensated Absences	Net Pension Liability	Total
1. Debt at Beginning of Fiscal Year		57,245,000.00		822,923.00		1,732,838.00	101,228,000.00	161,028,761.00
2. Additional Debt Incurred During Year						183,085.00	16,023,000.00	16,206,085.00
3. Retirements and Repayments		2,145,000.00		362,307.00		203,976.00		2,711,283.00
4. Debt at End of Fiscal Year		55,100,000.00		460,616.00		1,711,947.00	117,251,000.00	174,523,563.00
5. Accreted Interest at End Of Fiscal Year								
6. Total Debt and Accreted Interest		55,100,000.00		460,616.00		1,711,947.00	117,251,000.00	174,523,563.00
7. Current Portion P&I - Due within 1 year		4,184,213.00		376,859.00		266,667.00		4,827,739.00
8. Interest Paid during current fiscal year		1,762,083.46		14,552.17				1,776,635.63

## (PRINCIPAL AMOUNTS ONLY)

PROPRIETARY FUNDS

1. Debt at Beginning of Fiscal Year
2. Additional Debt Incurred During Year
3. Retirements and Repayments
4. Debt at End of Fiscal Year
5. Accreted Interest at End Of Fiscal Year
6. Total Debt and Accreted Interest
7. Current Portion P&I - Due within 1 year
8. Interest Paid during current fiscal year

LEA : 125235103 Interboro SD

Printed 11/8/2018 2:03:21 PM

Page - 2 of 3

## Total Principal and Interest Payments Made by Your School - All Funds

Function	Fund		Principal (910)	Principal (920)	Interest (830)	Total (Principal +Interest)	Misc Other Uses (990)
5110	10	General Fund	2,507,306.83		1,770,963.09	4,278,269.92	
5110	20	Special Revenue Funds					
5110	30	Capital Projects Funds					
5110	40	Debt Service Fund					
5110	90	Permanent Fund					
5120	10	General Fund					
5120	20	Special Revenue Funds					
5120	30	Capital Projects Funds					
5120	40	Debt Service Fund					

## Total Debt Payments - Governmental Funds

\$2,507,306.83

\$1,770,963.09

\$4,278,269.92

Function	Fund		Principal (910)	Principal (920)	Interest (830)	Total (Principal +Interest)
5110	50	Enterprise Fund				
5110	60	Internal Service Fund				
5120	50	Enterprise Fund				
5120	60	Internal Service Fund				

## Total Debt Payments - Proprietary Funds

LEA : 125235103 Interboro SD

Printed 11/8/2018 2:03:21 PM

Page - 3 of 3

Debt Category	Debt Issue Date (MM/YYYY)	Principal Amounts Only			Current Portion Due Within One Year (Principal and Interest)	Interest Paid During Fiscal Year
		Debt at Beginning of Fiscal Year	Additions	Reductions / Repayments		
General Obligation Bonds/Notes – CIB	03/2017	7,115,000.00		5,000.00	7,110,000.00	218,535.94
General Obligation Bonds/Notes – CIB	05/2016	6,105,000.00		65,000.00	6,040,000.00	189,475.00
General Obligation Bonds/Notes – CIB	05/2015	7,080,000.00		40,000.00	7,040,000.00	237,485.00
General Obligation Bonds/Notes – CIB	06/2015	6,090,000.00		100,000.00	5,990,000.00	143,762.50
General Obligation Bonds/Notes – CIB	06/2015	1,770,000.00		280,000.00	1,490,000.00	41,250.00
General Obligation Bonds/Notes – CIB	01/2014	8,615,000.00		1,325,000.00	7,290,000.00	242,806.26
General Obligation Bonds/Notes – CIB	02/2014	11,805,000.00		5,000.00	11,800,000.00	484,456.26
General Obligation Bonds/Notes – CIB	06/2013	8,665,000.00		325,000.00	8,340,000.00	204,312.50
Other Long Term Debt/Liabilities		822,923.00		362,307.00	460,616.00	14,552.17
Compensated Absences		1,732,838.00	183,085.00	203,976.00	1,711,947.00	266,667.00
Net Pension Liability		101,228,000.00	16,023,000.00		117,251,000.00	
<b>Totals for Debt Entered:</b>		<b>\$161,028,761.00</b>	<b>\$16,206,085.00</b>	<b>\$2,711,283.00</b>	<b>\$174,523,563.00</b>	<b>\$1,776,635.63</b>



LEA : 125235103 Interboro SD

Printed 11/8/2018 2:03:23 PM

Page - 1 of 1

General Fund (10)**Section 1: Tuition/Purchased Services as Reported within Expenditure Detail**

	Amount
Tuition Reported in General Fund Expenditures 1000-560	3,146,546.51
Purchased Services in General Fund Expenditures 1000-594 and 1000-597	198,543.27
<b>Section 1 Total</b>	<b>\$3,345,089.78</b>

**Section 2: Tuition Paid to Institution Types During Fiscal Year**

	Tuition Paid For Nonspecial Education	Tuition Paid For Special Education	Total
1 1306 Institutions			
2 Institutionalized Children's Programs		268,003.53	268,003.53
3 Juveniles Incarcerated in Adult Facilities			
4 Residential Treatment Facilities			
5 Other Local Education Agencies	26,467.83	127,306.44	153,774.27
6 Brick and Mortar Charter Schools	174,475.10	51,910.31	226,385.41
7 Cyber Charter Schools	190,709.37	109,646.48	300,355.85
8 Career and Technology Centers	1,327,576.20	68,779.80	1,396,356.00
9 Approved Private Schools		546,537.93	546,537.93
10 PA Chartered Schools for the Deaf and Blind			
11 Private Residential Rehabilitative Institutions	14,747.21	240,132.23	254,879.44
12 Juvenile Detention Centers		198,543.27	198,543.27
13 Special Program Jointures			
14 Other Tuition Not Included Elsewhere In This Section	20.00	234.08	254.08
<b>Section 2 Total</b>	<b>\$1,733,995.71</b>	<b>\$1,611,094.07</b>	<b>\$3,345,089.78</b>

1 .	<u>Student Transportation Services for Educational Field Trips</u>	19,574.94
2 .	<u>Student Transportation Services for Student Activities</u>	31,537.61
3 .	<u>Rental of Vehicles for Student Transportation Services</u>	
4 .	<u>Capital Reserve Funds</u>	

Include only district-owned transportation expenditures paid from State or local money.

DO NOT include federal expenditures or payments to contract service providers.

Contracted transportation services should not be recorded on this schedule.

LEA : 125235103 Interboro SD

Printed 11/8/2018 2:03:26 PM

Page - 1 of 2

**Food Service / Cafeteria Operations Fund (51)****3000 Operation of Non-Instructional Services****Total****100 Personnel Services – Salaries**

100 Personnel Services – Salaries

8,435.00

**Total Personnel Services – Salaries****\$8,435.00****200 Personnel Services – Employee Benefits**

220 Social Security Contributions

645.39

230 PSERS Retirement Contributions

1,613.22

250 Unemployment Compensation

8.49

260 Workers' Compensation

75.90

**Total Personnel Services – Employee Benefits****\$2,343.00****400 Purchased Property Services**

430 Repairs and Maintenance Services

37,932.00

**Total Purchased Property Services****\$37,932.00****500 Other Purchased Services**

530 Communications

671.00

570 Food Service Management

1,097,494.00

580 Travel

9.00

**Total Other Purchased Services****\$1,098,174.00****600 Supplies**

610 General Supplies

1,044.58

630 Food

100,570.92

650 Supplies &amp; Fees – Technology Related

4,621.50

**Total Supplies****\$106,237.00****700 Property**

740 Depreciation

50,300.00

**Total Property****\$50,300.00****800 Other Objects**

810 Dues and Fees

600.00

890 Miscellaneous Expenditures

774.00

**Total Other Objects****\$1,374.00****Total 3000 Operation of Non-Instructional Services****\$1,304,795.00**

LEA : 125235103 Interboro SD

Printed 11/8/2018 2:03:26 PM

Page - 2 of 2

## Food Service / Cafeteria Operations Fund (51)

3100 Food Services	<u>Elementary</u>	<u>Secondary</u>	<u>Federal</u>	<u>Total</u>
100 <u>Personnel Services – Salaries</u>				
100 Personnel Services – Salaries				8,435.00
<b>Total Personnel Services – Salaries</b>				<b>\$8,435.00</b>
200 <u>Personnel Services – Employee Benefits</u>				
220 Social Security Contributions				645.39
230 PSERS Retirement Contributions				1,613.22
250 Unemployment Compensation				8.49
260 Workers' Compensation				75.90
<b>Total Personnel Services – Employee Benefits</b>				<b>\$2,343.00</b>
400 <u>Purchased Property Services</u>				
430 Repairs and Maintenance Services				37,932.00
<b>Total Purchased Property Services</b>				<b>\$37,932.00</b>
500 <u>Other Purchased Services</u>				
530 Communications				671.00
570 Food Service Management				1,097,494.00
580 Travel				9.00
<b>Total Other Purchased Services</b>				<b>\$1,098,174.00</b>
600 <u>Supplies</u>				
610 General Supplies				1,044.58
630 Food				100,570.92
650 Supplies & Fees – Technology Related				4,621.50
<b>Total Supplies</b>				<b>\$106,237.00</b>
700 <u>Property</u>				
740 Depreciation				50,300.00
<b>Total Property</b>				<b>\$50,300.00</b>
800 <u>Other Objects</u>				
810 Dues and Fees				600.00
890 Miscellaneous Expenditures				774.00
<b>Total Other Objects</b>				<b>\$1,374.00</b>
<b>Total 3100 Food Services</b>				<b>\$1,304,795.00</b>



	<u>Food Service(51)</u>	<u>Child Care Operations(52)</u>	<u>Other Enterprise(58)</u>	<u>Internal Service(60)</u>	<u>Total</u>
3000 <u>Operation of Non-Instructional Services</u>					
3100 Food Services	1,304,795.00				1,304,795.00
<b>Total Operation of Non-Instructional Services</b>	<b>\$1,304,795.00</b>				<b>\$1,304,795.00</b>
<b>TOTAL ACTUAL EXPENDITURES &amp; OTHER FINANCING USES</b>	<b>\$1,304,795.00</b>				<b>\$1,304,795.00</b>